



Posting Packet

August 2006



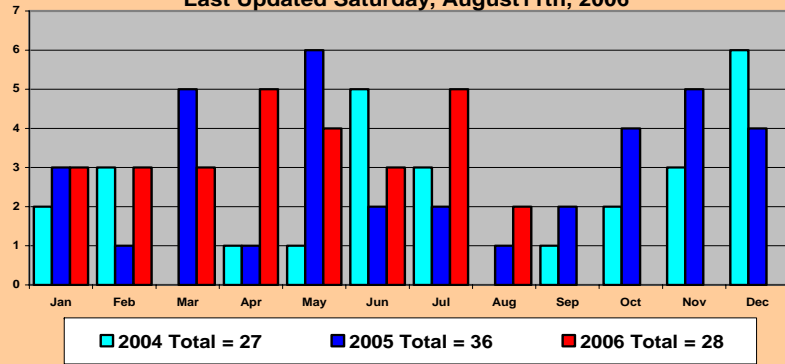
Personal Injuries

Incidents			Reportables			FSI		
2005	2006	Chg.	2005	2006	Chg.	05	06	Chg.
	ALL			ALL			ALL	
21	28	33%	3	9	200%	1.25	3.71	197%
	TRANS			TRANS				
13	17	31%	0	5	#DIV/0!			
	ENGR			ENGR				
3	3	0%	1	2	100%			
	MECH - Car			MECH - Car				
3	7	133%	0	1	#DIV/0!			
	MECH - Loco			MECH - Loco				
3	1	-67%	2	1	-50%			

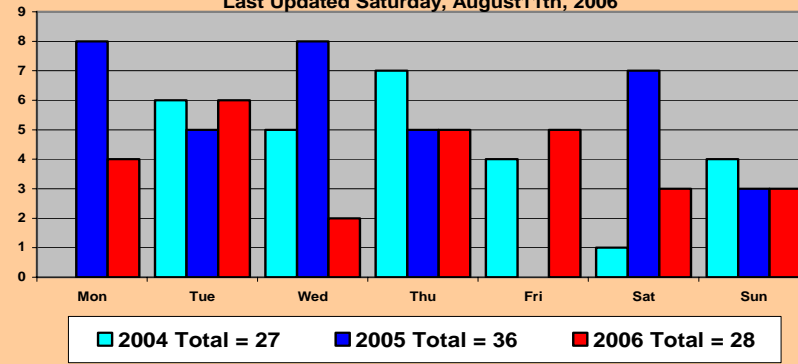


Personal Injuries

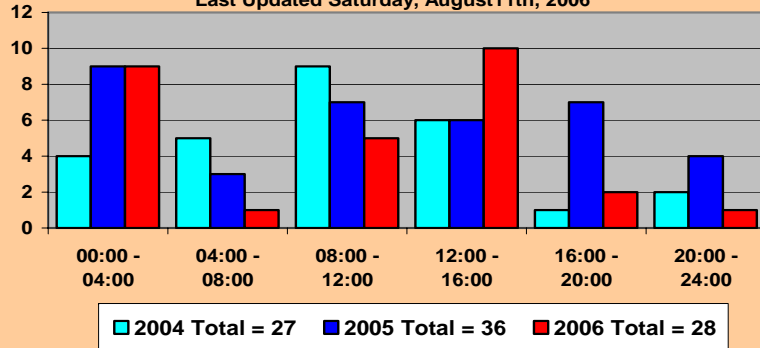
The Belt Railway of Chicago
All Injury Incidents by Month
Last Updated Saturday, August 11th, 2006



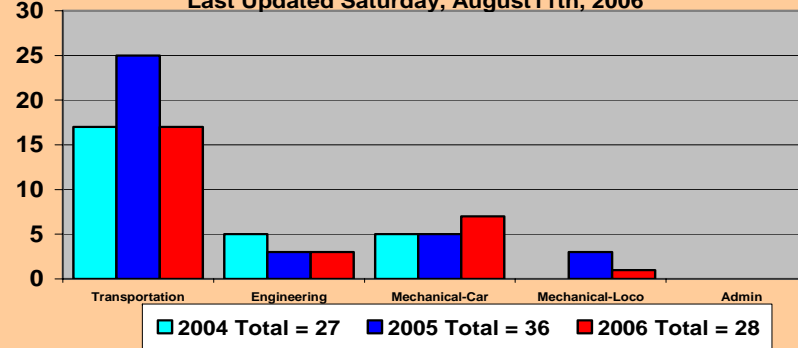
The Belt Railway of Chicago
All Injury Incidents by Day of Week
Last Updated Saturday, August 11th, 2006



The Belt Railway of Chicago
All Injury Incidents by Time of Day
Last Updated Saturday, August 11th, 2006



The Belt Railway of Chicago
All Injury Incidents by Department
Last Updated Saturday, August 11th, 2006



Injury Free Days

August 11, 2006

BRC

Trans

Engr

Mech

Last Incident

Days Since

Last Reportable

Days Since

8/5/2006

6

6/9/2006

63

8/4/2006

7

5/18/2006

85

6/9/2006

63

6/9/2006

63

8/5/2006

6

4/7/2006

126

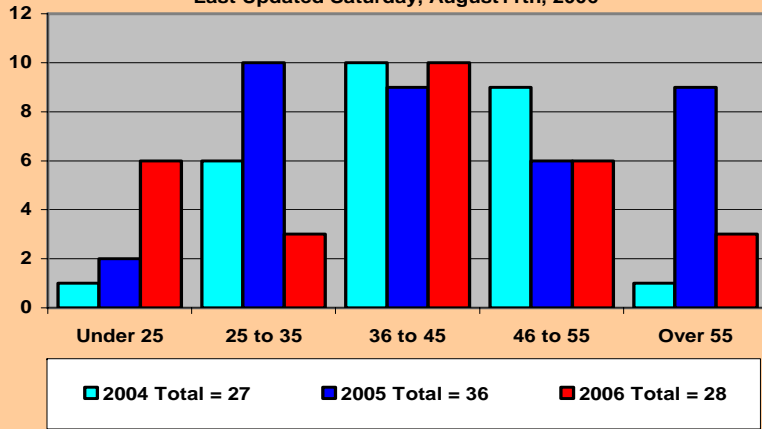


Personal Injuries

The Belt Railway of Chicago

All Injury Incidents by Age

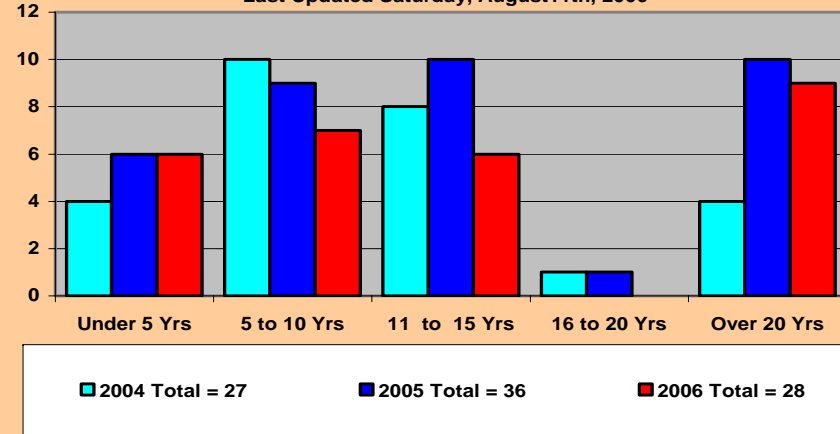
Last Updated Saturday, August 11th, 2006



The Belt Railway of Chicago

All Injury Incidents by Experience

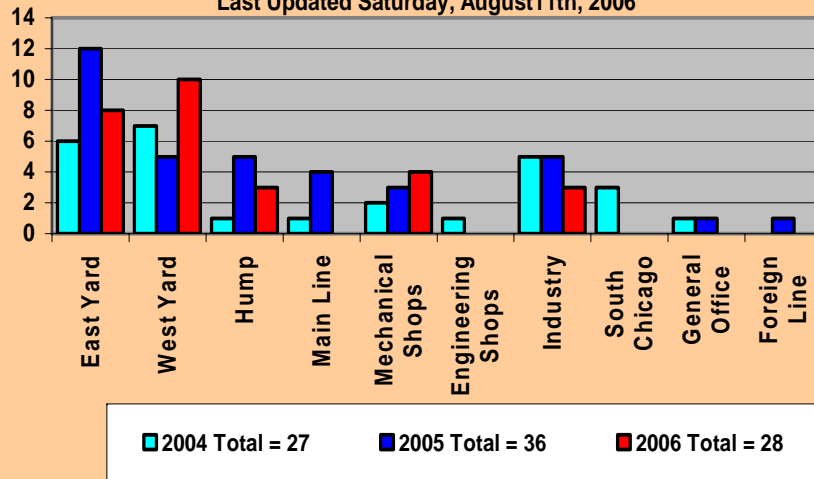
Last Updated Saturday, August 11th, 2006



The Belt Railway of Chicago

All Injury Incidents by Location

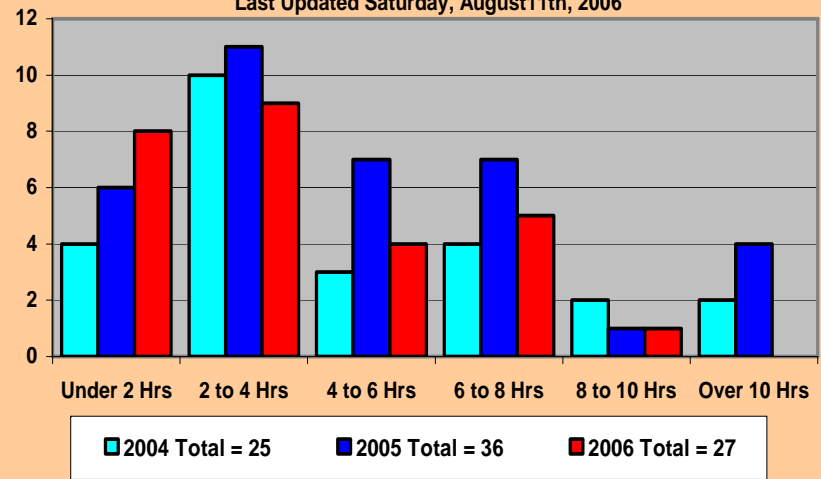
Last Updated Saturday, August 11th, 2006



The Belt Railway of Chicago

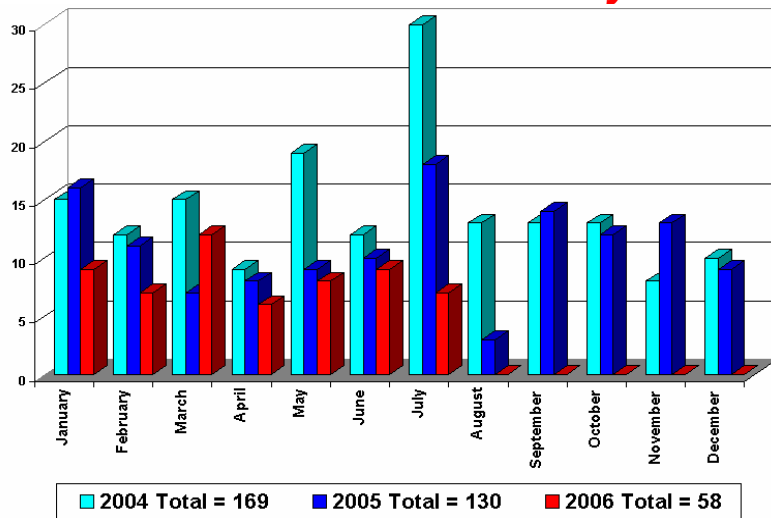
All Injury Incidents by Time Into Shift

Last Updated Saturday, August 11th, 2006

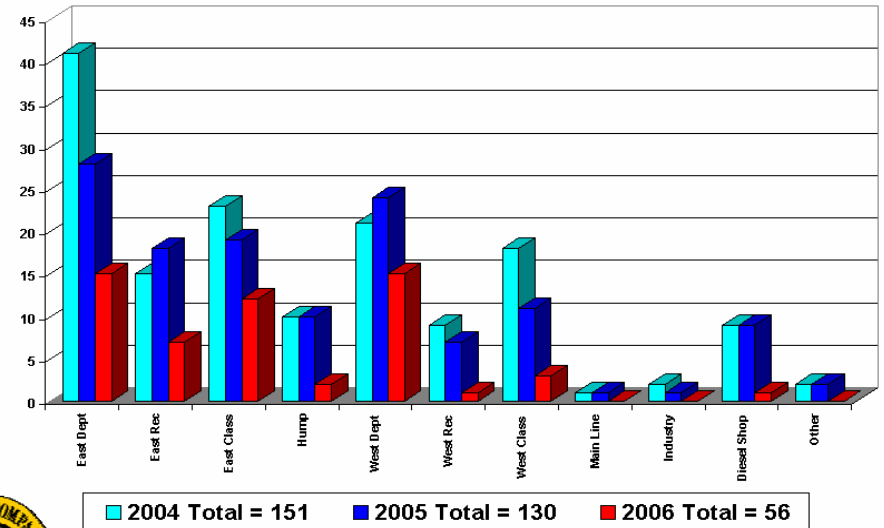


Run Thru Switches

- By Month -

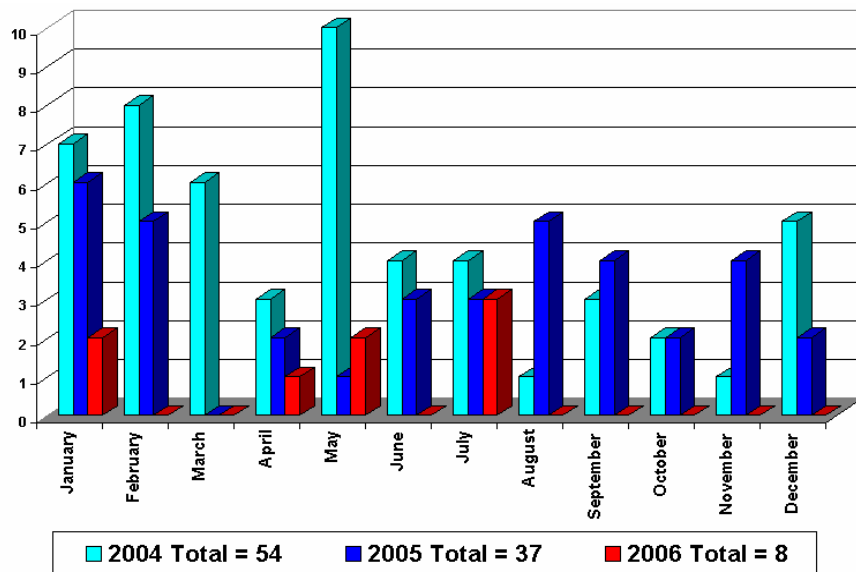


- By Location -



Run Outs

- By Month -



Run Thru Switches BRC vs Foreign Carrier

2005	2006	Chg.
BRC Run Thru Switches		
75	45	-40%
Foreign Run Through Switches		
4	13	225%
Total Run Thru Switches		
79	58	-27%

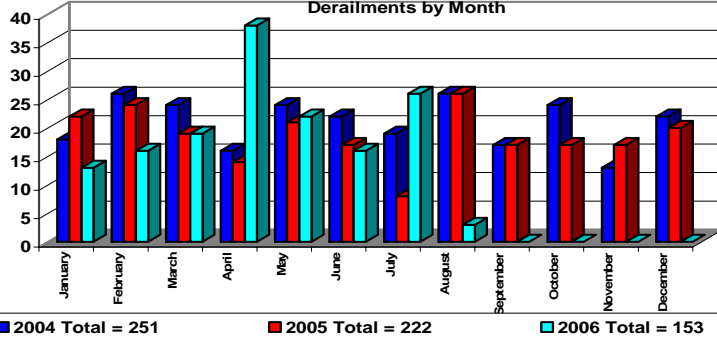


Derailments

August 3, 2006

Belt Railway Company of Chicago

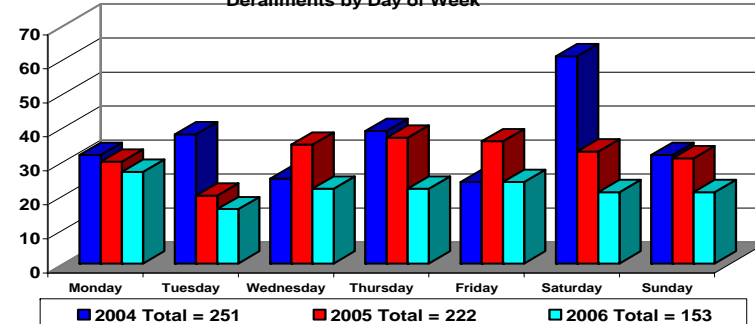
Derailments by Month



2004 Total = 251 2005 Total = 222 2006 Total = 153

Belt Railway Company of Chicago

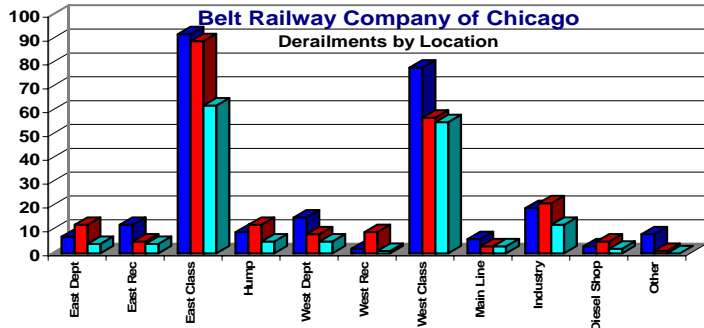
Derailments by Day of Week



2004 Total = 251 2005 Total = 222 2006 Total = 153

Belt Railway Company of Chicago

Derailments by Location

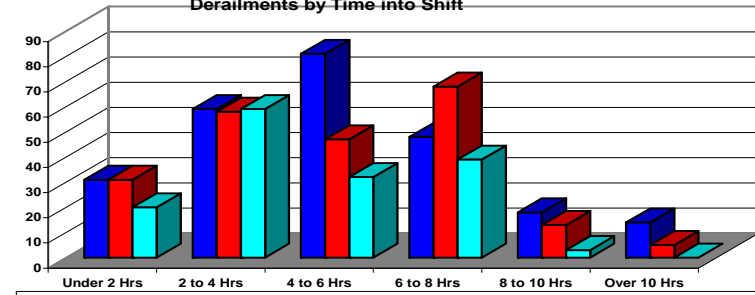


2004 Total = 251 2005 Total = 222 2006 Total = 153

Belt Railway Company of Chicago

Derailments by Time into Shift

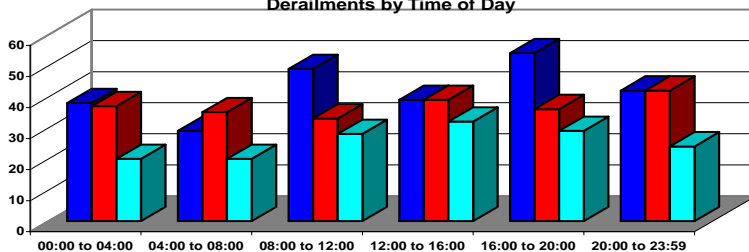
By-Pass Coupler (unknown) -
Start of Shift: 07:00, 15:00,
23:00



2004 Total = 251 2005 Total = 222 2006 Total = 153

Belt Railway Company of Chicago

Derailments by Time of Day



2004 Total = 251 2005 Total = 222 2006 Total = 153



Human Factor Derailments

Human Factor - by Cause (includes Foreign)

	Switches	Brakes	Shoves	Skates	Derails	Impact	T Hndlg	Make up	Other	TTL	Fgn/Hum	ByPass
Jan	2	0	0	1	0	0	0	0	0	3	1	3
Feb	3	0	0	0	1	0	0	0	0	4	2	9
Mar	1	0	0	0	0	0	0	0	1	2	0	10
Apr	2	1	1	0	0	0	0	0	2	6	2	19
May	2	0	0	2	0	0	0	0	1	5	2	10
Jun	1	0	0	1	0	0	0	0	0	2	0	8
Jul	0	0	1	0	0	0	0	0	1	2	0	13
Aug	0	0	0	0	0	0	0	0	0	0	0	0
Sep										0		
Oct										0		
Nov										0		
Dec										0		
Total	11	1	2	4	1	0	0	0	5	24	7	72

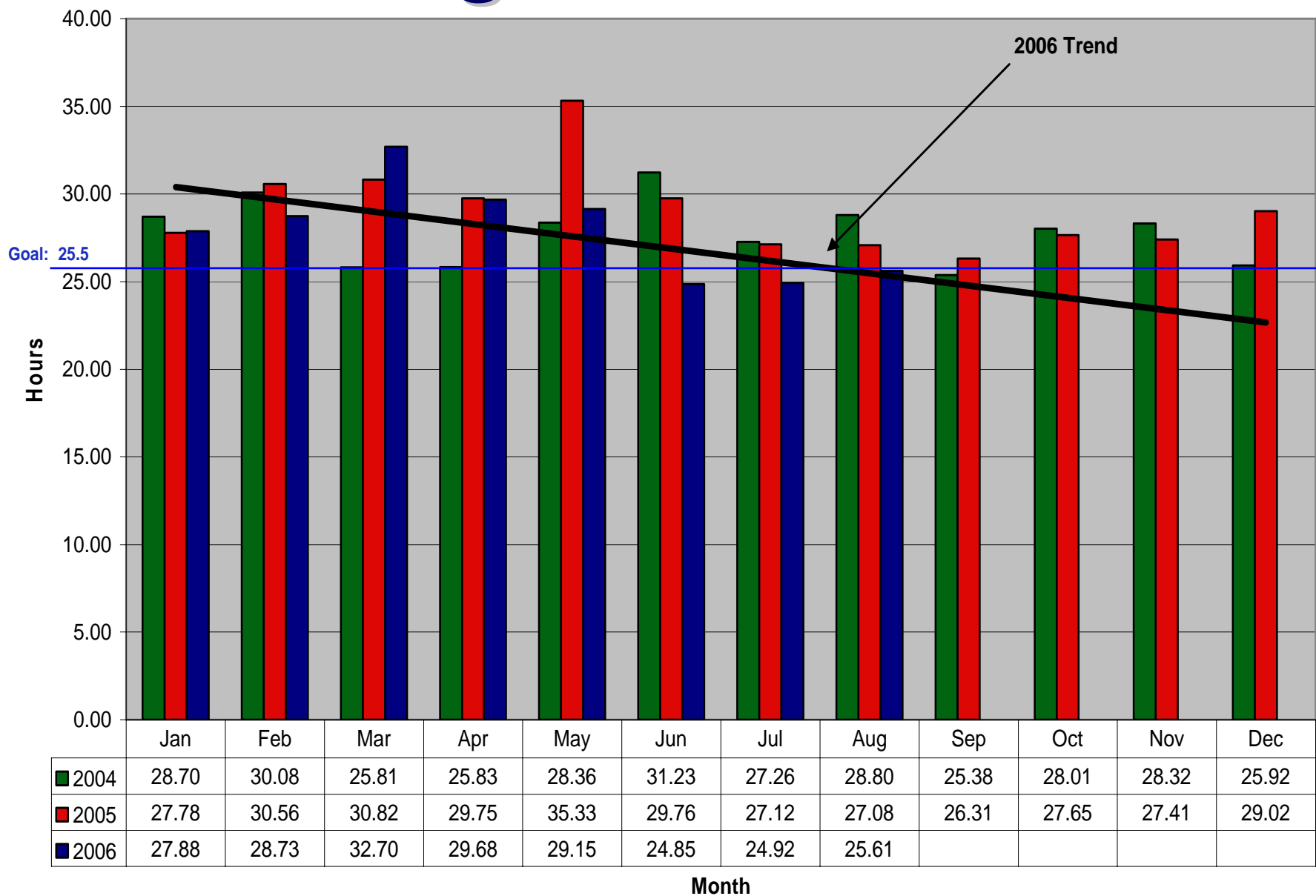
TOTAL BRC Human Factor: 17

Human Factor Derailment Comparison

2005	2006	Chg.	2005	2006	Chg.	2005	2006	Chg.
BRC Human Factor			Foreign Human Factor			Total Human Factor		
37	17	-54%	11	7	-36%	48	24	-50%

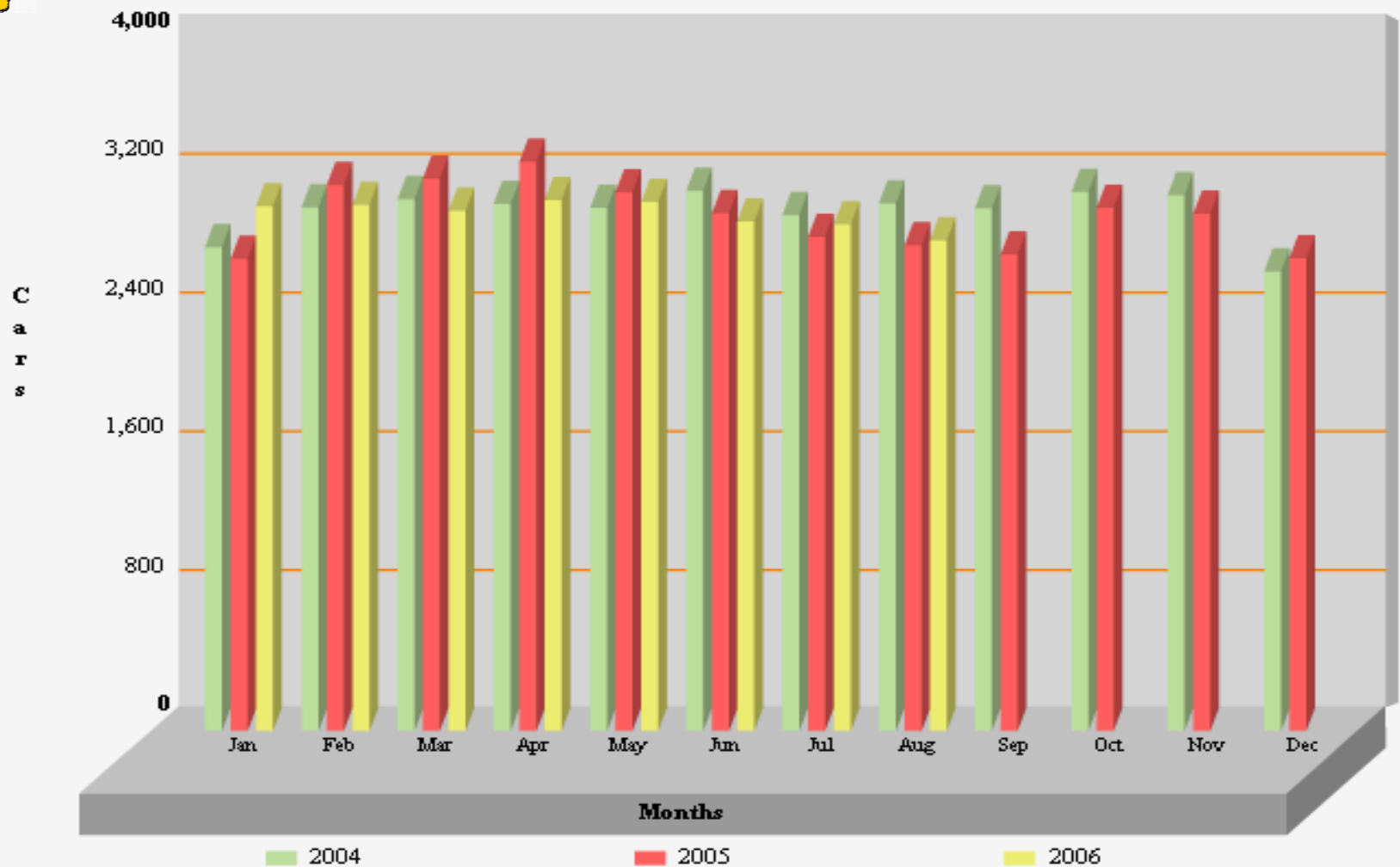


Clearing Dwell





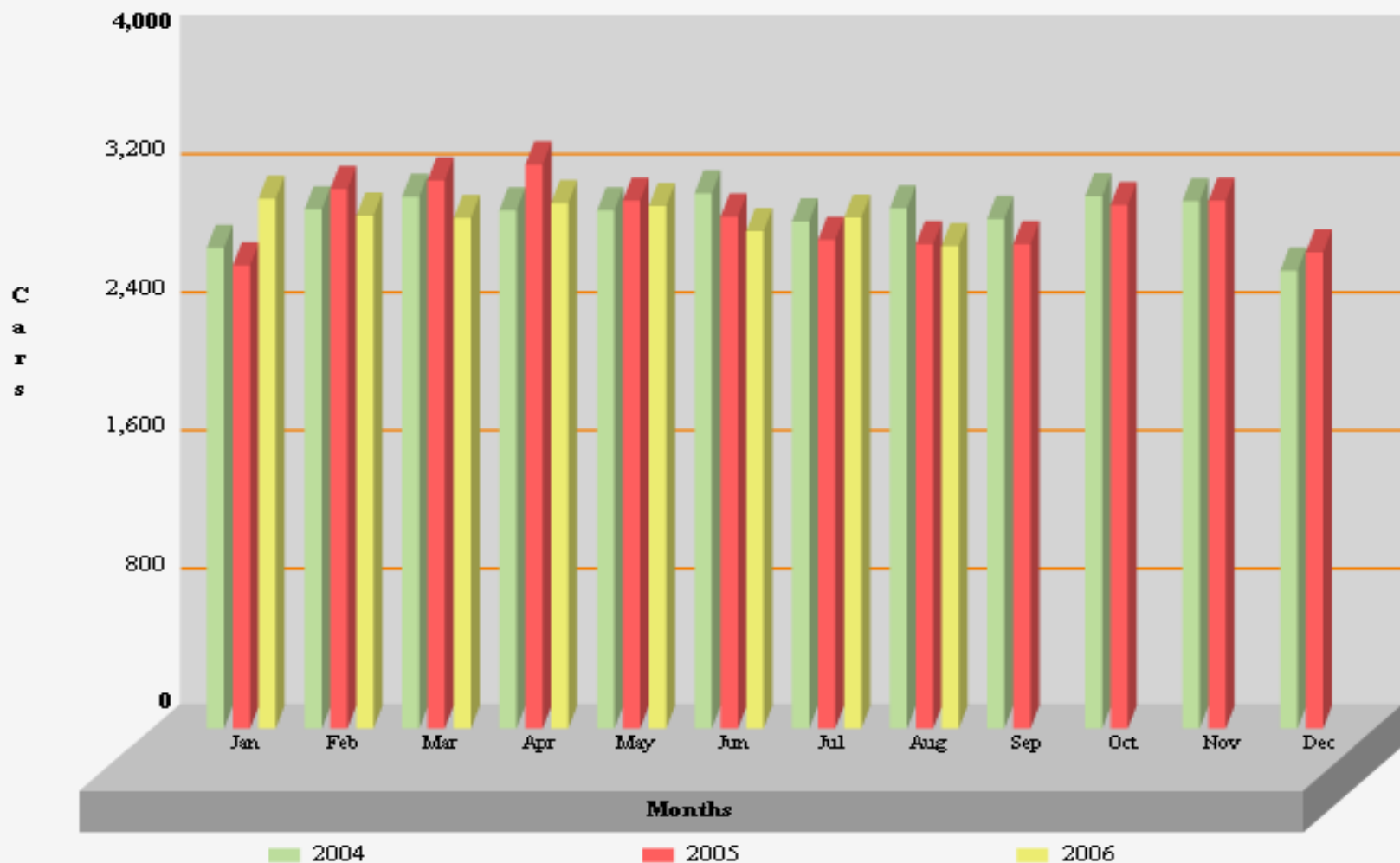
Cars Humped



Series	Jan	Feb	Mar	Apr	May	Jun	Jul	Aug	Sep	Oct	Nov	Dec
2004	2789	3018	3065	3037	3017	3114	2974	3041	3014	3108	3089	2649
2005	2721	3147	3183	3282	3105	2986	2849	2799	2747	3016	2981	2725
2006	3025	3033	2999	3060	3048	2937	2920	2827				



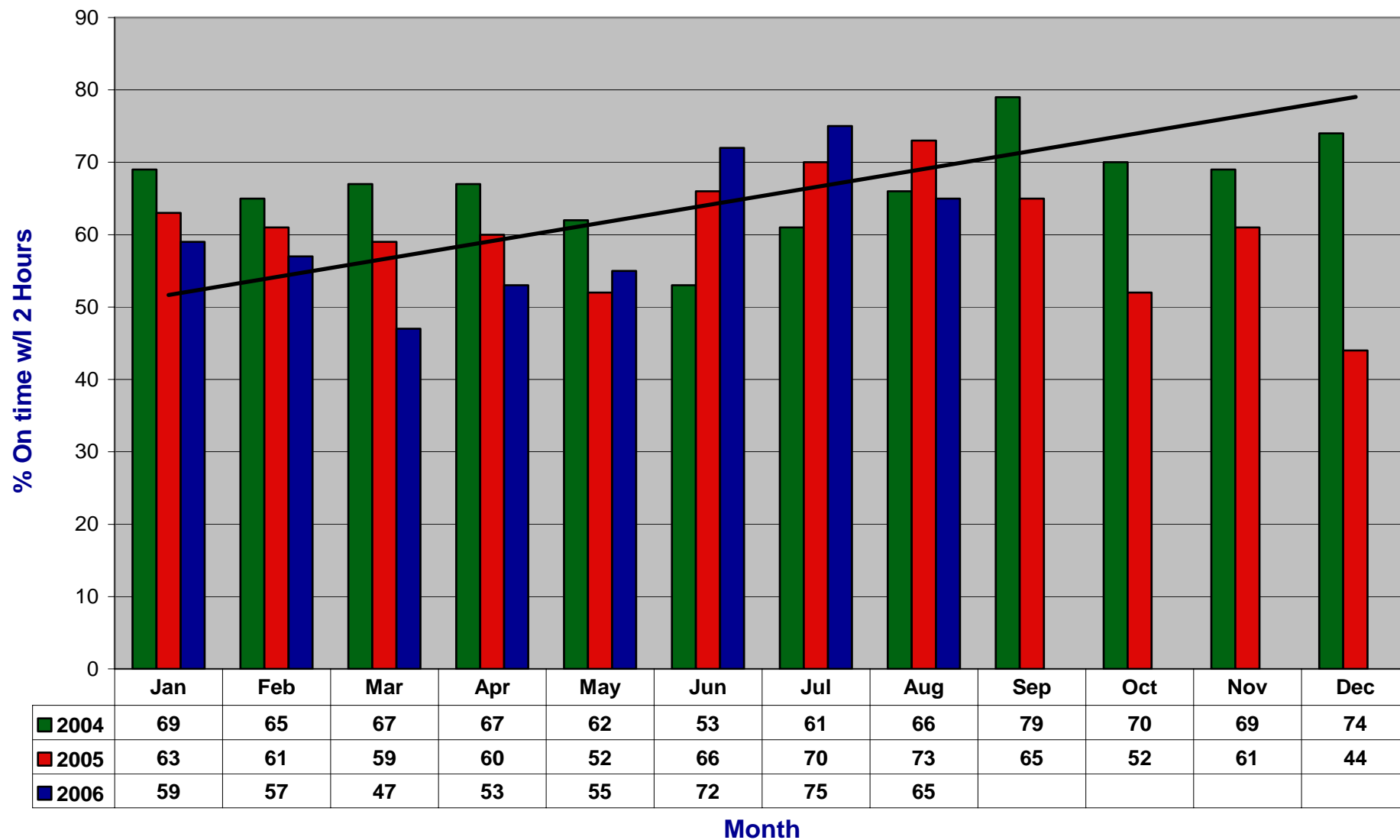
Cars Pulled Down



Series	Jan	Feb	Mar	Apr	May	Jun	Jul	Aug	Sep	Oct	Nov	Dec
2004	2784	3008	3080	3003	3001	3101	2938	3013	2950	3083	3056	2653
2005	2684	3125	3176	3267	3059	2965	2831	2805	2807	3032	3058	2759
2006	3070	2971	2958	3043	3027	2881	2959	2795				

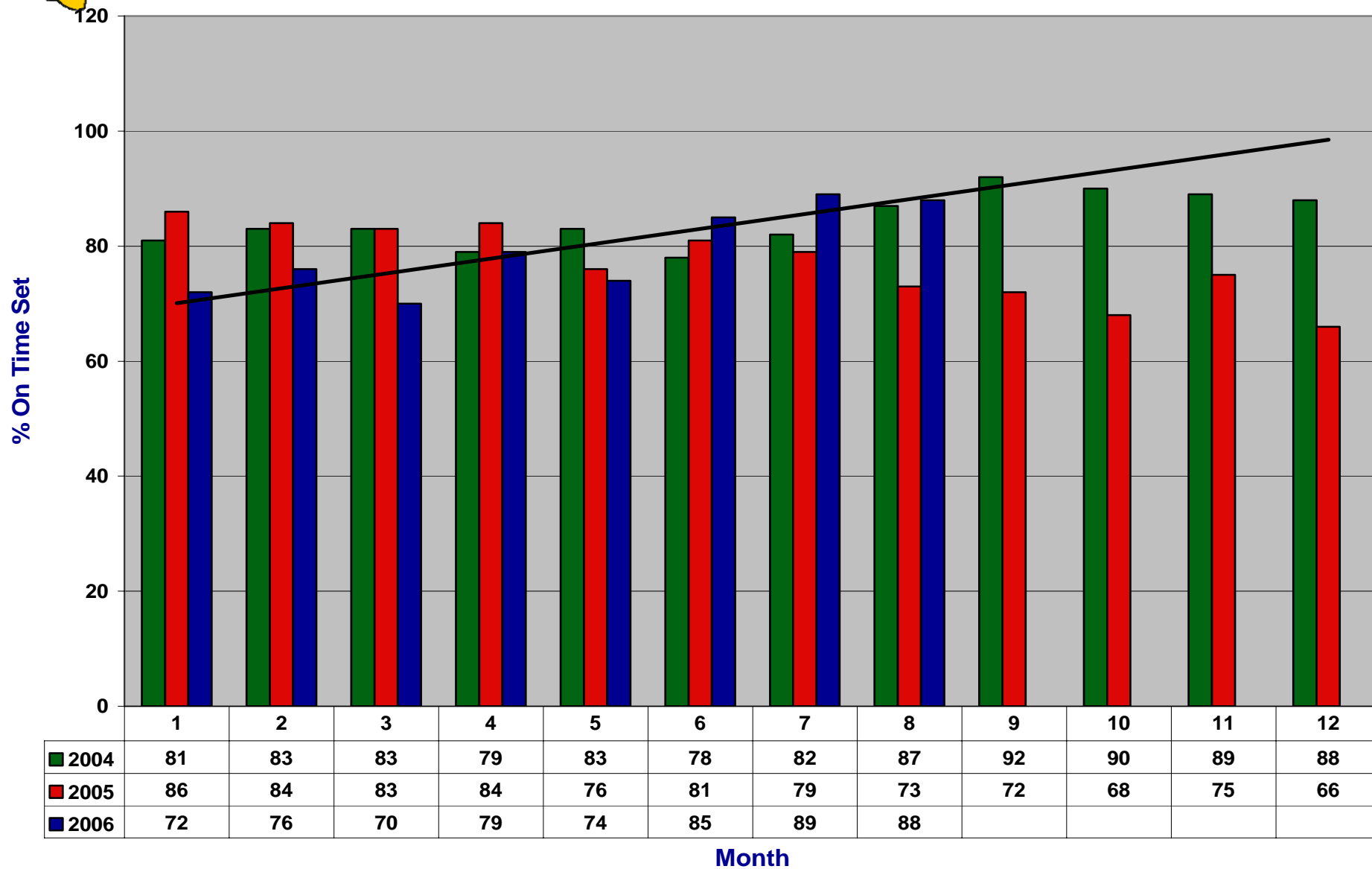


On Time Performance





On Set Time Performance





Bad Order Dwell



	Jan	Feb	Mar	Apr	May	Jun	Jul	Aug	Sep	Oct	Nov	Dec
■ B/O to Spot, incl. 8889	42.41	38.06	52.50	54.94	43.35	38.09	34.75	32.67	0.00	0.00	0.00	0.00
■ Spot to OK, excl. 8889	57.82	39.20	57.81	64.78	42.65	60.92	46.97	46.61	0.00	0.00	0.00	0.00
■ OK to Enroute	37.43	43.36	37.93	41.57	51.08	35.54	29.88	34.59	0.00	0.00	0.00	0.00

Month

August 11, 2006