



# *Posting Packet*

*December 1, 2006*



# Personal Injury Performance

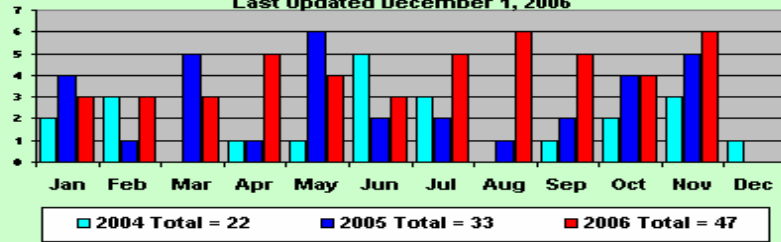
December 1, 2006

Incidents			Reportables			FSI		
2005	2006	Chg.	2005	2006	Chg.	05	06	Chg.
	<b>ALL</b>			<b>ALL</b>			<b>ALL</b>	
33	47	42%	6	14	133%	1.57	3.17	102%
	<b>TRANS</b>			<b>TRANS</b>			<b>TRANSPORTATION</b>	
23	32	39%	3	9	200%	1.55	5.03	225%
	<b>ENGR</b>			<b>ENGR</b>			<b>ENGINEERING</b>	
3	5	67%	1	2	100%	2.26	2.55	13%
	<b>MECH - Car</b>			<b>MECH - Car</b>			<b>MECHANICAL</b>	
3	8	167%	0	2	#DIV/0!	1.89	3.03	60%
	<b>MECH - Loco</b>			<b>MECH - Loco</b>			<b>ADMIN</b>	
4	1	-75%	2	1	-50%	0.00	0.00	#DIV/0!
	<b>ADMIN</b>			<b>ADMIN</b>				
0	1	#DIV/0!	0	0	#DIV/0!			
FSI data thru Oct								

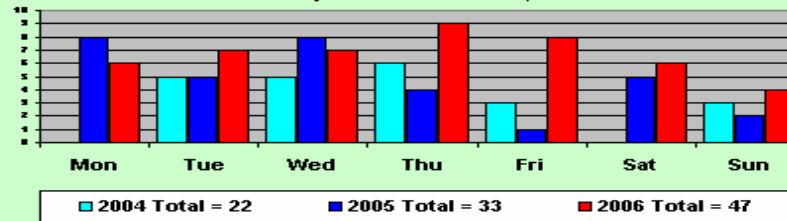
**YTD Comparison: 2006 vs. 2005**



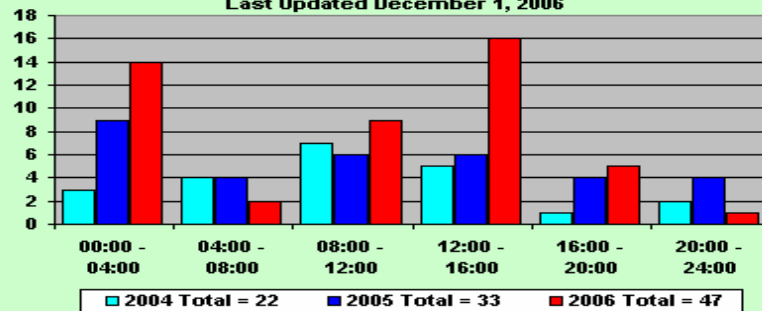
**The Belt Railway of Chicago**  
All Injury Incidents by Month  
Last Updated December 1, 2006



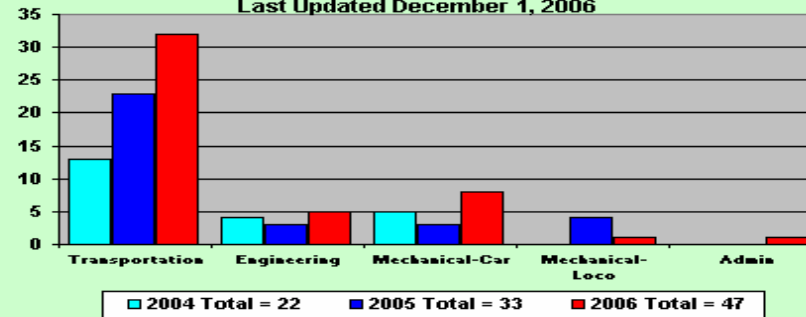
**The Belt Railway of Chicago**  
All Injury Incidents by Day of Week  
Last Updated December 1, 2006



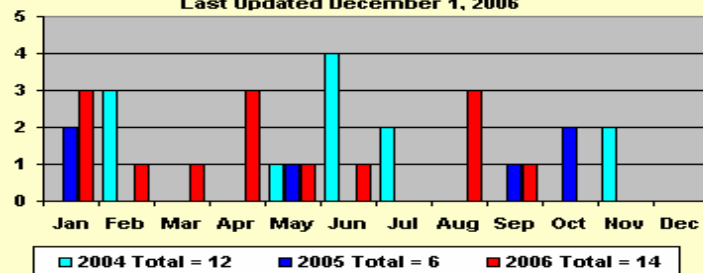
**The Belt Railway of Chicago**  
All Injury Incidents by Time of Day  
Last Updated December 1, 2006



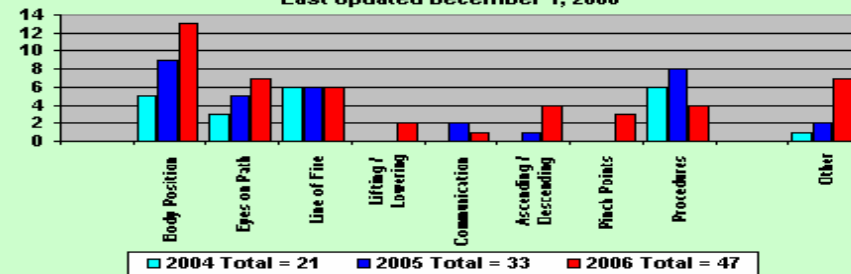
**The Belt Railway of Chicago**  
All Injury Incidents by Department  
Last Updated December 1, 2006



**The Belt Railway of Chicago**  
Reportable Injuries by Month  
Last Updated December 1, 2006



**The Belt Railway of Chicago**  
All Injury Incidents by BELL CAPP  
Last Updated December 1, 2006



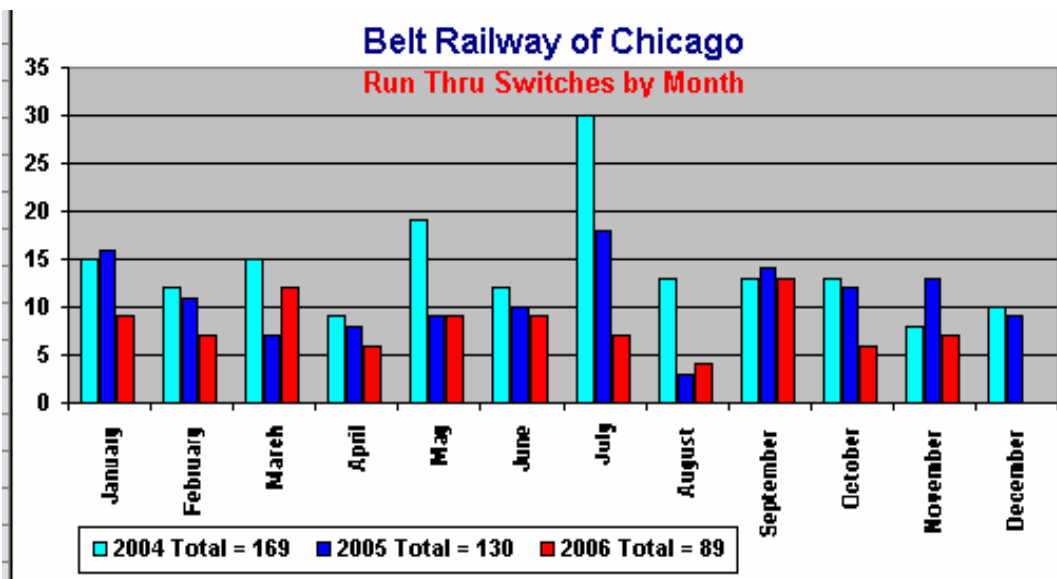
**Injury Free Days**

December 1, 2006

	<u>Last Incident</u>	<u>Days Since</u>	<u>Last Reportable</u>	<u>Days Since</u>	
<b>BRC</b>	11/22/2006	<b>9</b>	9/16/2006	<b>76</b>	
<b>Trans</b>	11/22/2006	<b>9</b>	9/16/2006	<b>76</b>	[ 265 days, 12-18-2004 thru 9-09-2005 ]
<b>Engr</b>	9/6/2006	<b>86</b>	6/9/2006	<b>175</b>	[ 446 days, 1-27-2005 thru 4-19-2006 ]
<b>Mech</b>	8/30/2006	<b>93</b>	8/30/2006	<b>93</b>	[ 197 days, 5-22-2005 thru 12-02-2005 ]
<b>Admin</b>	11/2/2006	<b>29</b>			



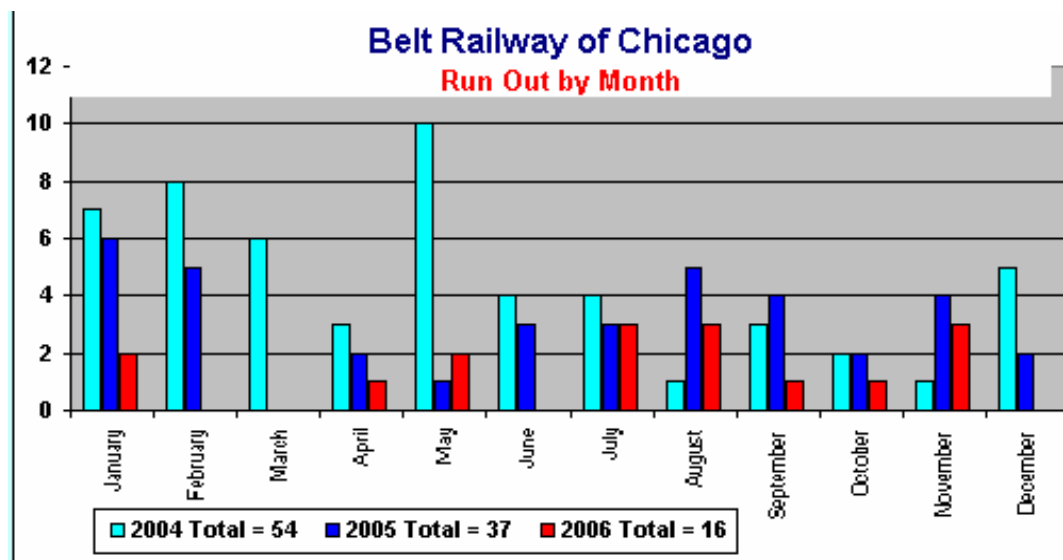
# Run Thru Switches



## Run Thru Switches BRC vs Foreign Carrier

2005	2006	Chg.
Switches		
99	72	-27%
Foreign Run Through Switches		
22	17	- 26%
Total Run Thru Switches		
121	89	26%

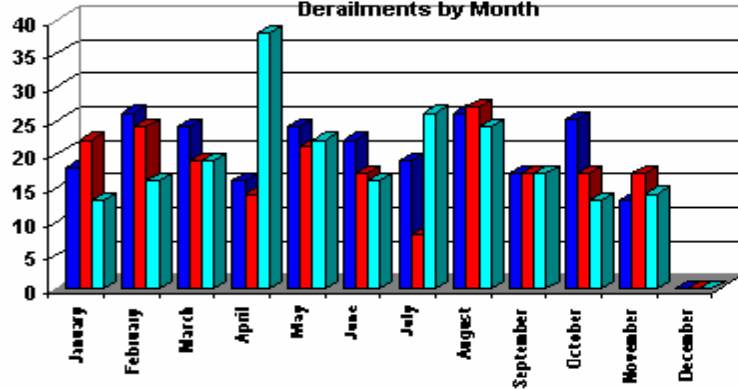
# Run Outs



## Run Outs

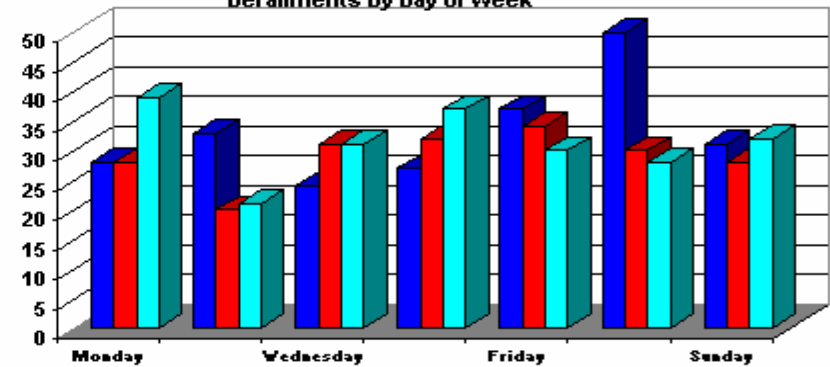
2005	2006	Chg.
Run Outs		
35	16	- 54%

**Belt Railway Company of Chicago**  
Derailments by Month



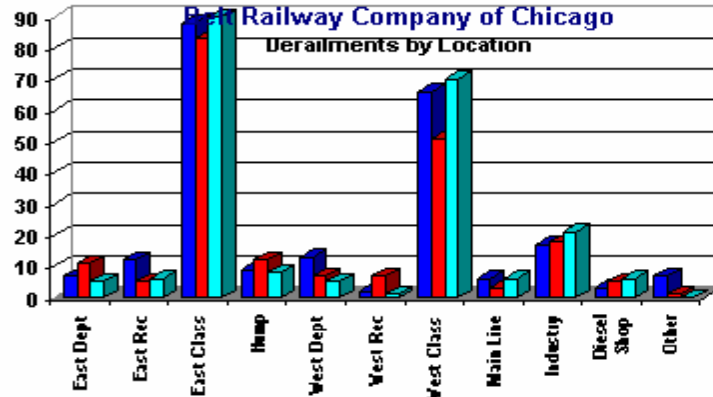
■ 2004 Total = 230    ■ 2005 Total = 203    ■ 2006 Total = 218

**Belt Railway Company of Chicago**  
Derailments by Day of Week



■ 2004 Total = 230    ■ 2005 Total = 203    ■ 2006 Total = 218

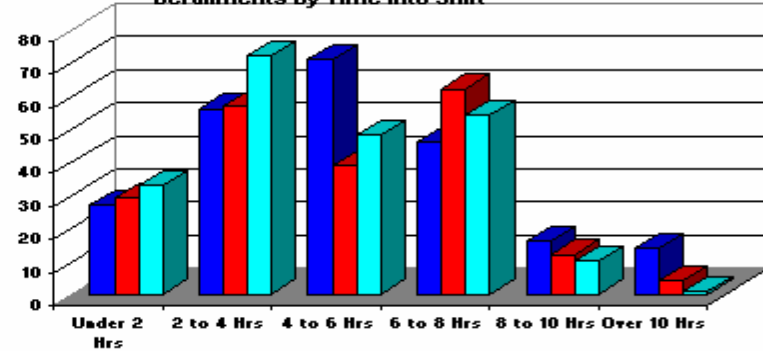
**Belt Railway Company of Chicago**  
Derailments by Location



■ 2004 Total = 230    ■ 2005 Total = 203    ■ 2006 Total = 218

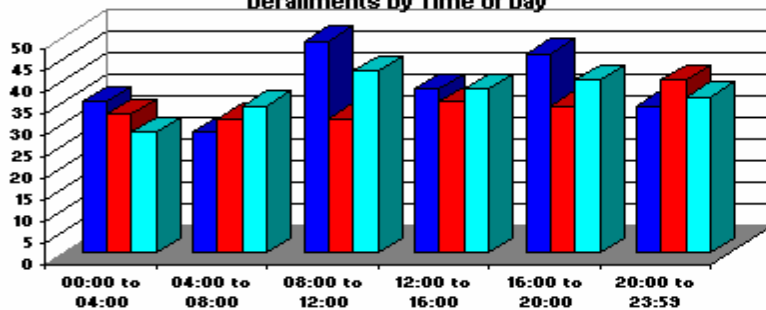
**Belt Railway Company of Chicago**  
Derailments by Time into Shift

By-Pair Coupler (unknown) -  
Start of Shift: 07:00, 15:00, 23:00



■ 2004 Total = 230    ■ 2005 Total = 203    ■ 2006 Total = 218

**Belt Railway Company of Chicago**  
Derailments by Time of Day



■ 2004 Total = 230    ■ 2005 Total = 203    ■ 2006 Total = 218

**Derailment  
YTD Comparison  
2006 vs. 2005**





# Human Factor Derailments

- Including Foreign Crews

	Switches	Brakes	Shoves	Skates	Derails	Impact	T Hndlg	Make up	Other	TTL	Fgn/Hum	ByPass
Jan	2	0	0	1	0	0	0	0	0	3	1	3
Feb	3	0	0	0	1	0	0	0	0	4	2	9
Mar	1	0	0	0	0	0	0	0	1	2	0	10
Apr	2	1	1	0	0	0	0	0	2	6	2	19
May	2	0	0	2	0	0	0	0	1	5	2	10
Jun	1	0	0	1	0	0	0	0	0	2	0	8
Jul	0	0	1	0	0	0	1	0	1	3	0	13
Aug	0	0	0	0	0	0	1	0	0	1	1	12
Sep	1	1	1	0	0	0	0	0	1	4	1	7
Oct	1	0	0	0	1	0	0	0	2	4	1	4
Nov	1	1	1	0	1	0	0	0	1	5	2	7
Dec										0		
<b>Total</b>	<b>14</b>	<b>3</b>	<b>4</b>	<b>4</b>	<b>3</b>	<b>0</b>	<b>2</b>	<b>0</b>	<b>9</b>	<b>39</b>	<b>12</b>	<b>102</b>

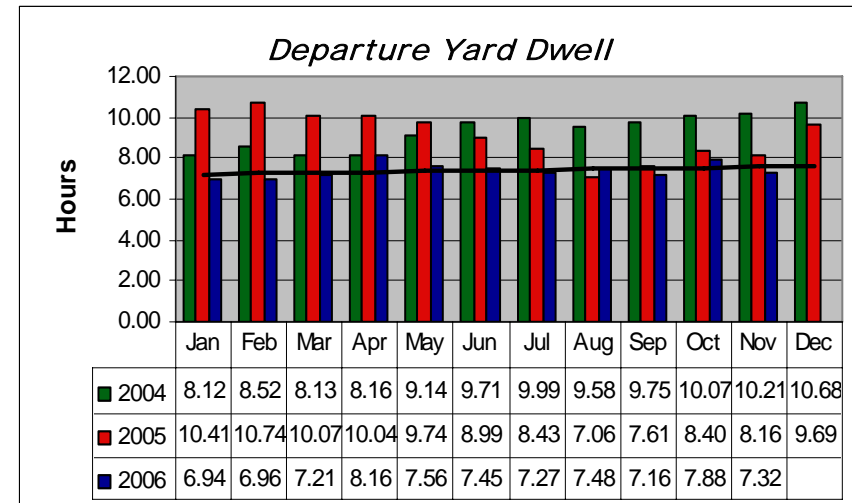
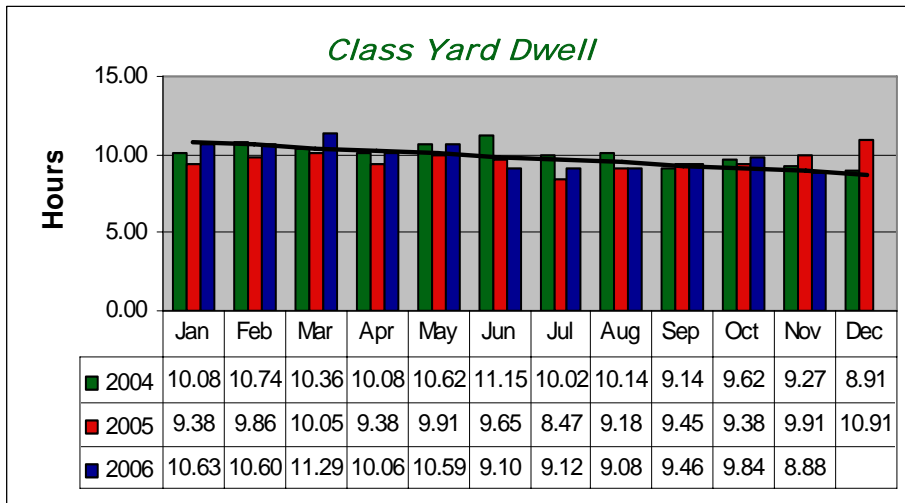
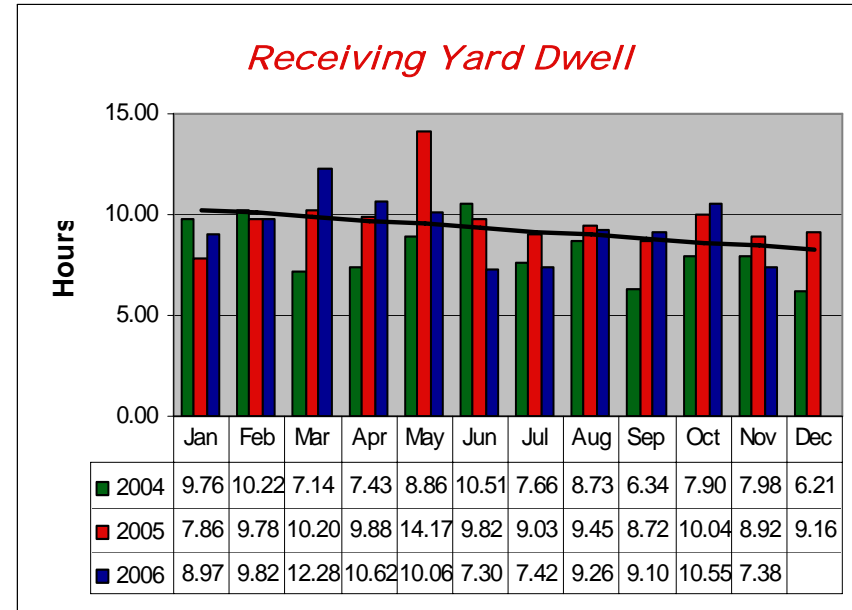
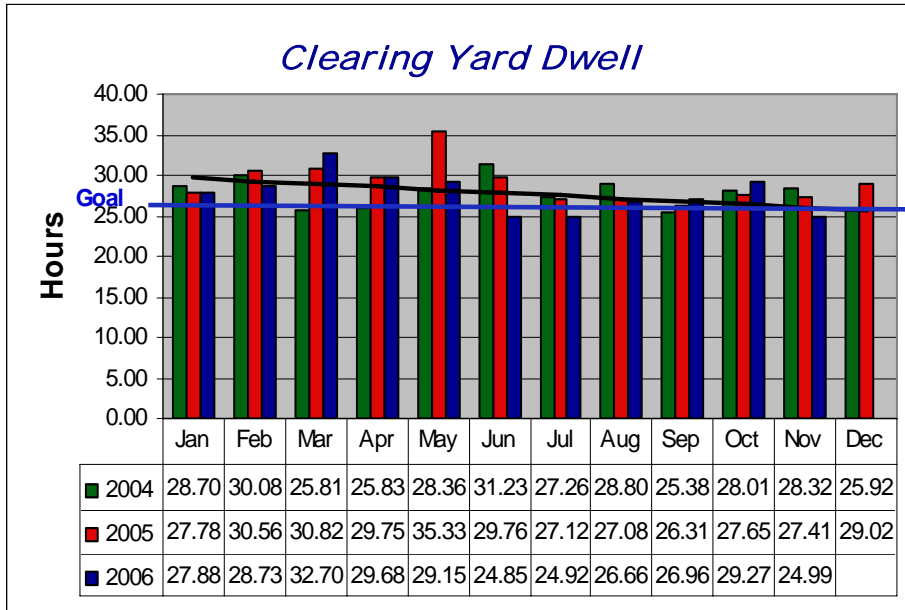
**TOTAL BRC Human Factor: 27**

## Human Factor Derailment Comparison

2005	2006	Chg.	2005	2006	Chg.	2005	2006	Chg.
<b>BRC Human Factor</b>			<b>Foreign Human Factor</b>			<b>Total Human Factor</b>		
49	27	- 45%	11	12	9%	60	39	- 35%



# Dwell

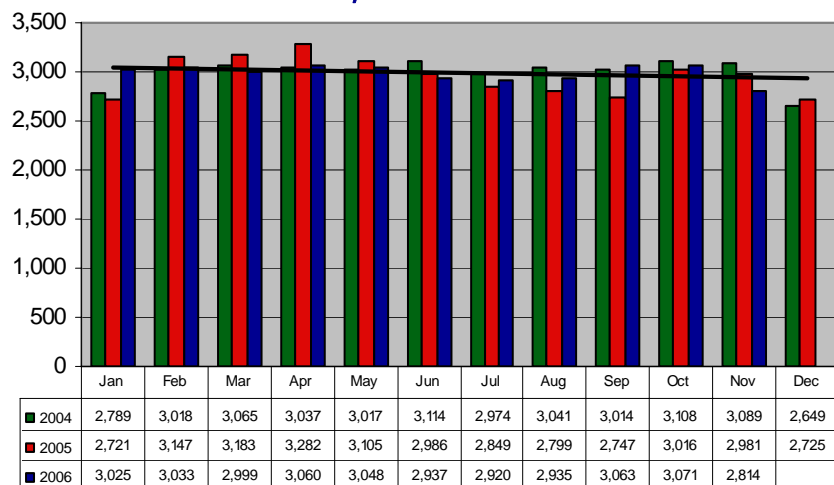


— 2006 Trend Line

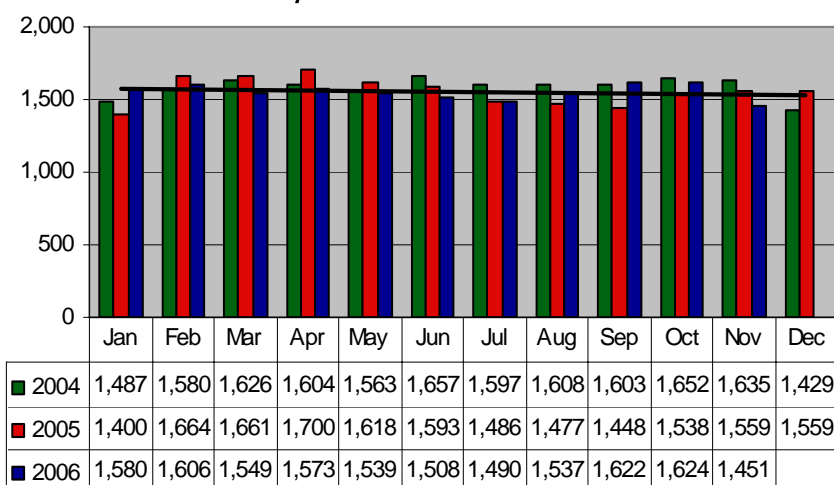


# Hump Production

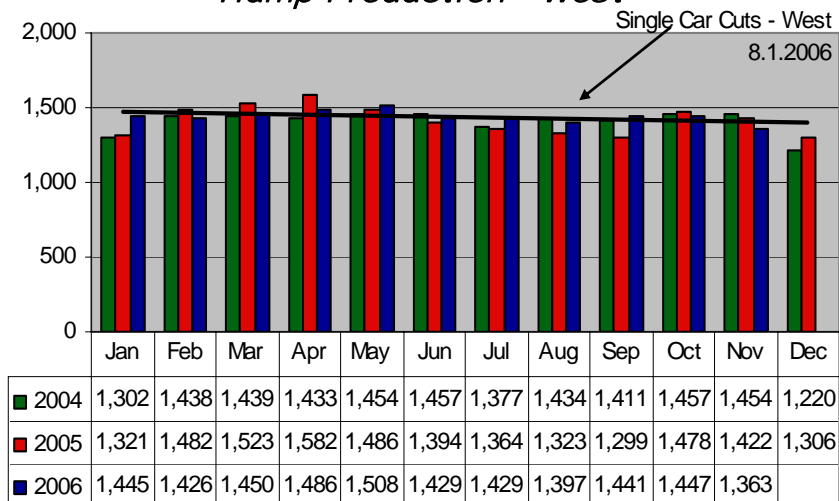
*Hump Production*



*Hump Production - East*



*Hump Production - West*

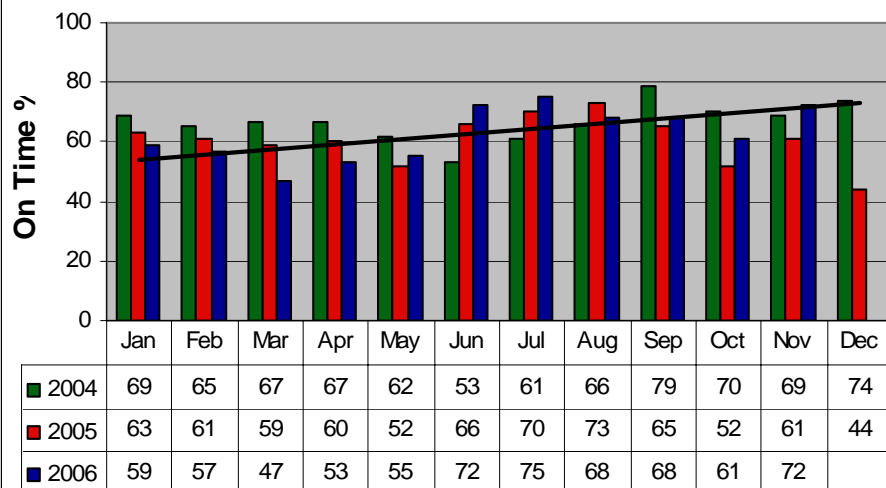




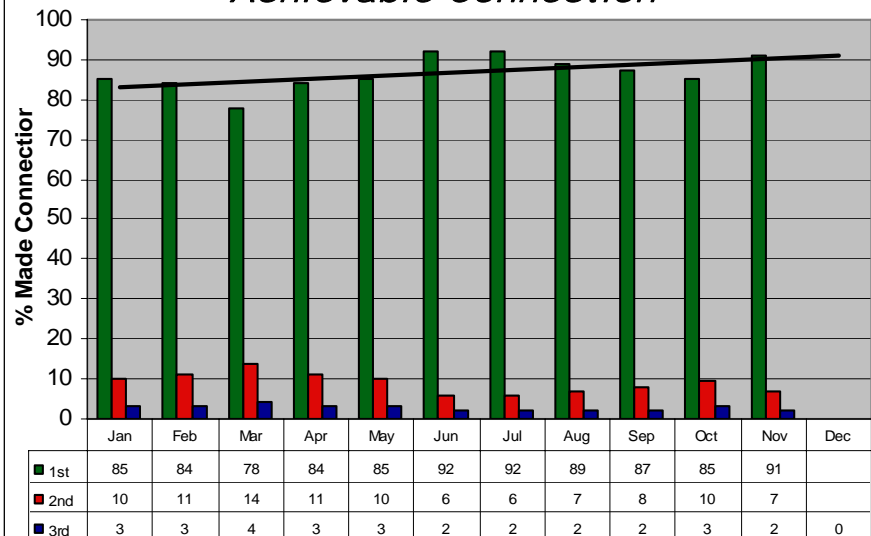
# Performance

*On Time Departure Performance*

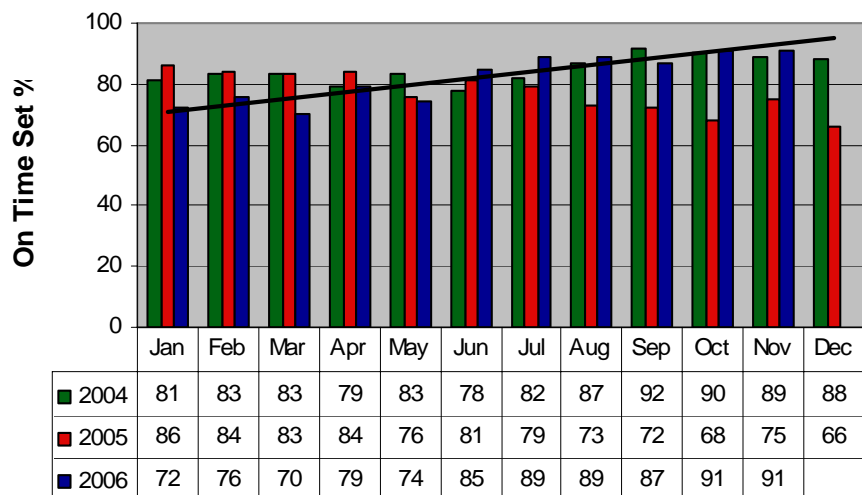
+/- 2 Hours



*Achievable Connection*

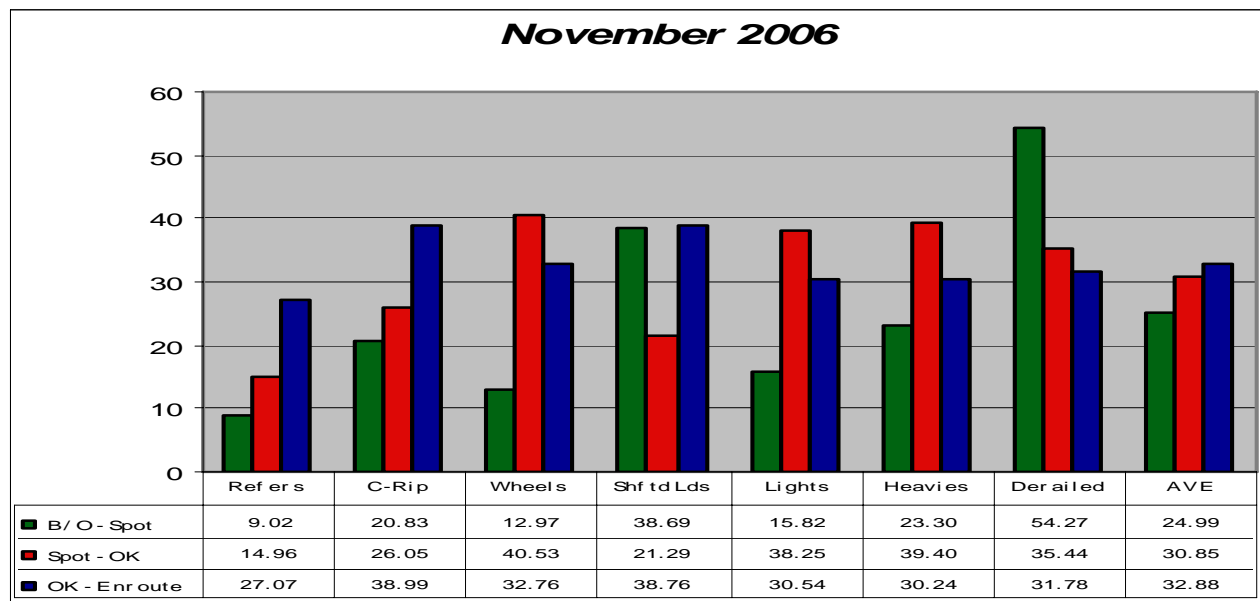
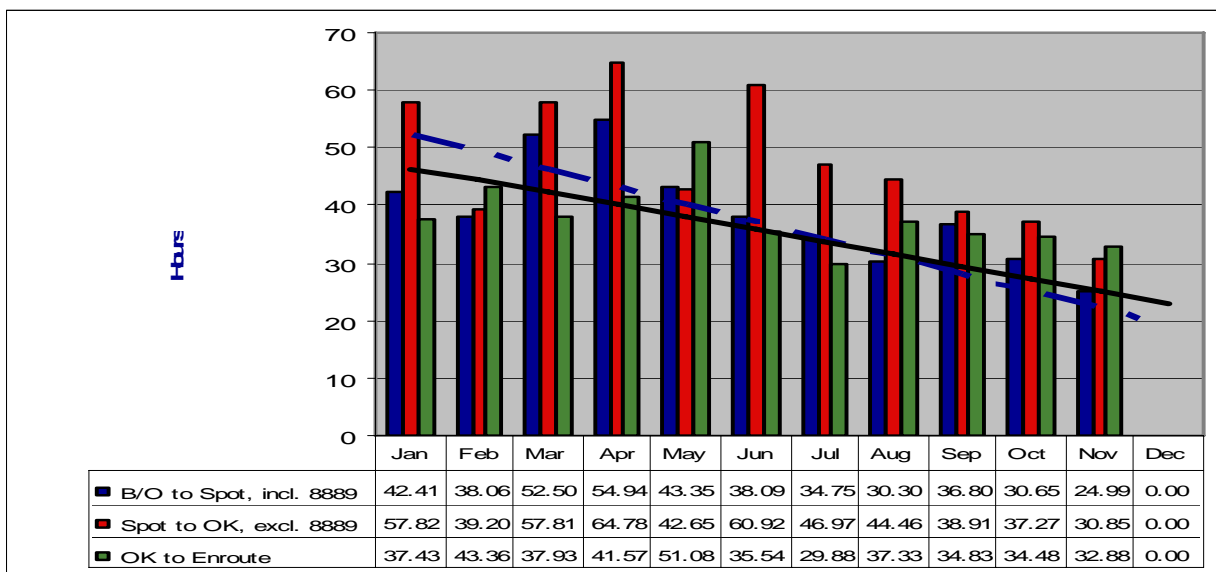


*On Time Set Performance*





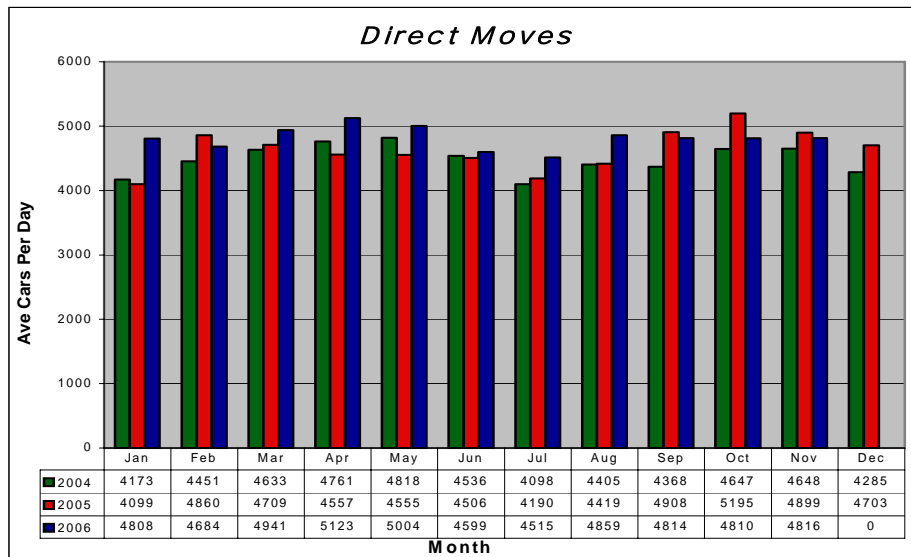
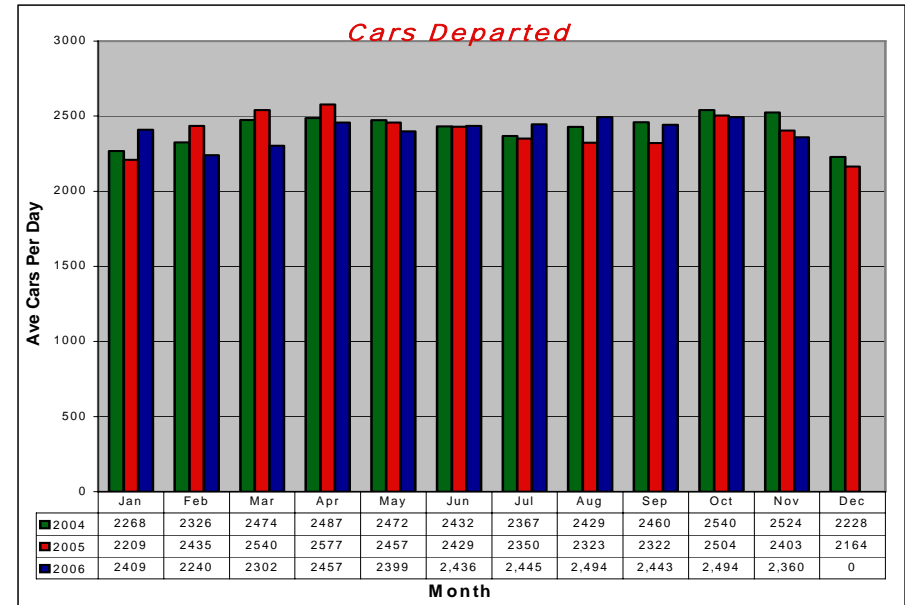
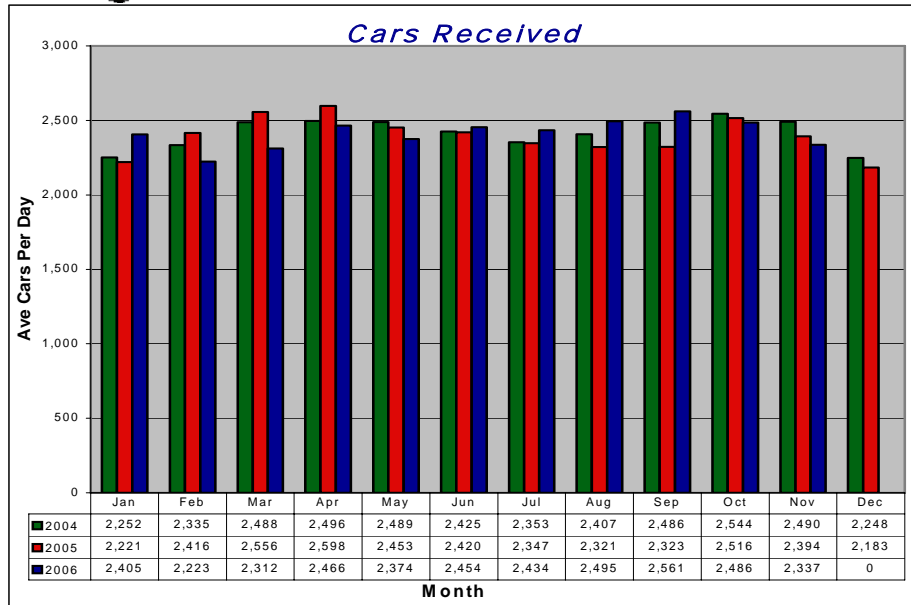
# Bad Order Dwell



December 1, 2006



# Cars Handled





Service

Safety

Leadership

# If You Suspect it, Report it...

## *Trespassers*

## *Suspicious Activity*

## *Suspicious Packages*

**Call the Belt Police Department**

6:00 a.m. To 6:00 p.m. (312) 543 – 8269

6:00 p.m. To 6:00 a.m. (312) 543 – 3658

24 Hour Pager (708) 396 – 4045