



Posting Packet

September 2006



Personal Injury Performance

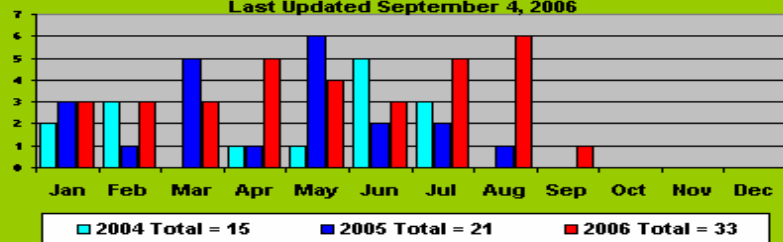
August 31, 2006

Incidents			Reportable Injuries			FSI		
2005	2006	Chg.	2005	2006	Chg.	2005	2006	Chg.
	ALL			ALL			ALL	
22	33	50%	3	12	300%	1.38	3.70	168%
	TRANS			TRANS			TRANSPORTATION	
12	20	67%	0	7	597%	0.65	4.53	597%
	ENGR			ENGR			ENGINEERING	
3	4	33%	1	2	100%	1.57	3.14	100%
	MECH - Car			MECH - Car			MECHANICAL	
3	8	167%	0	2	100%	2.37	3.56	50%
	MECH - Loco			MECH - Loco			Gen Off & Admin	
4	1	-75%	2	1	-50%	0.00	0.00	#DIV/0!

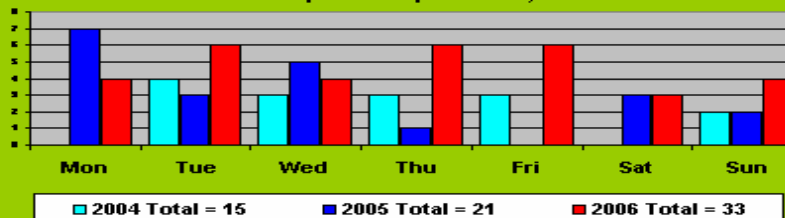
YEAR To DATE, 2006 vs. 2005



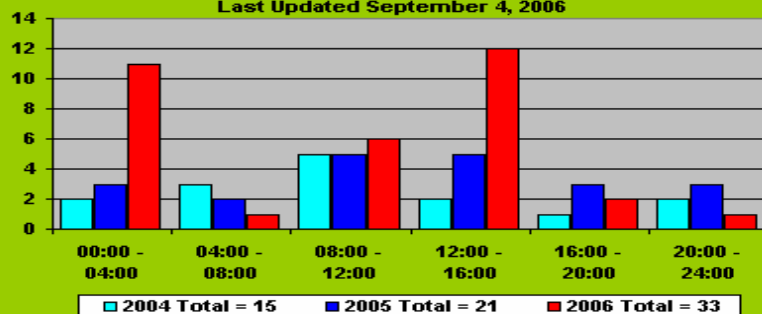
The Belt Railway of Chicago
All Injury Incidents by Month
Last Updated September 4, 2006



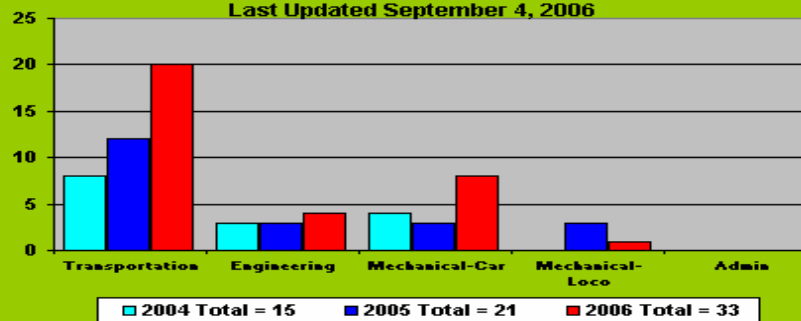
The Belt Railway of Chicago
All Injury Incidents by Day of Week
Last Updated September 4, 2006



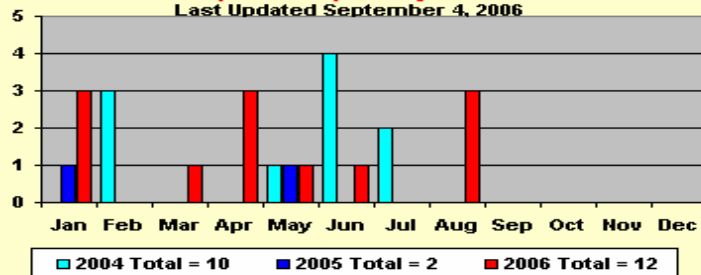
The Belt Railway of Chicago
All Injury Incidents by Time of Day
Last Updated September 4, 2006



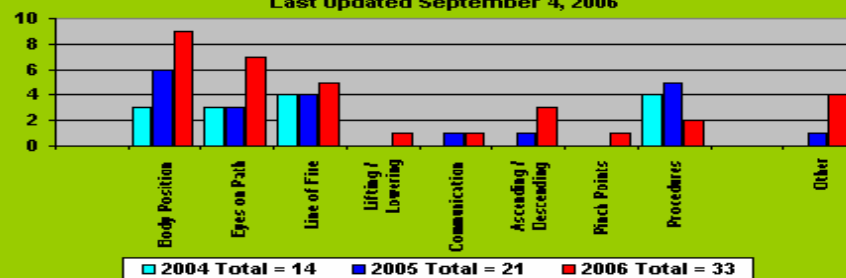
The Belt Railway of Chicago
All Injury Incidents by Department
Last Updated September 4, 2006



The Belt Railway of Chicago
Reportable Injuries by Month
Last Updated September 4, 2006



The Belt Railway of Chicago
All Injury Incidents by BELL CAPP
Last Updated September 4, 2006



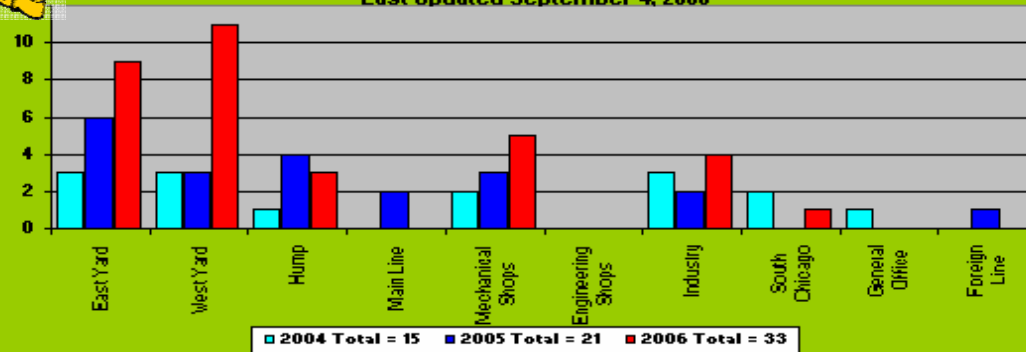
Injury Free Days

September 4, 2006

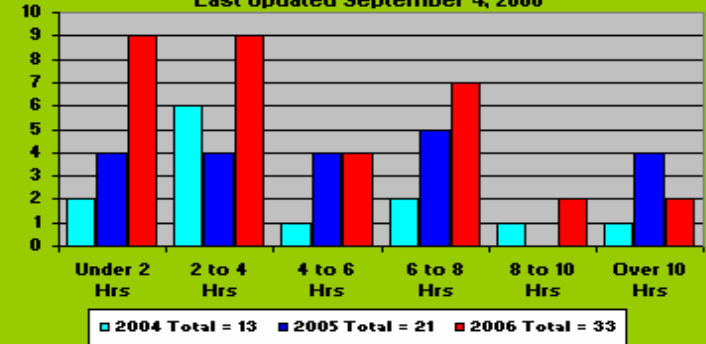
	<u>Last Incident</u>	<u>Days Since</u>	<u>Last Reportable</u>	<u>Days Since</u>	
BRC	9/1/2006	3	8/30/2006	5	
Trans	8/30/2006	5	8/20/2006	15	[265 days, 12-18-2004 thru 9-09-2005]
Engr	9/1/2006	3	6/9/2006	87	[446 days, 1-27-2005 thru 4-19-2006]
Mech	8/30/2006	5	8/30/2006	5	[197 days, 5-22-2005 thru 12-02-2005]



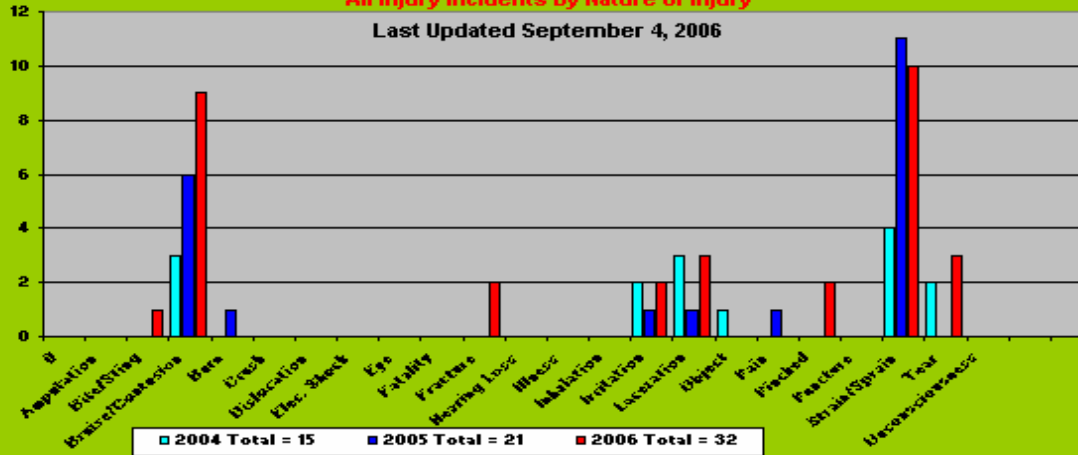
The Belt Railway of Chicago
All Injury Incidents by Location
 Last Updated September 4, 2006



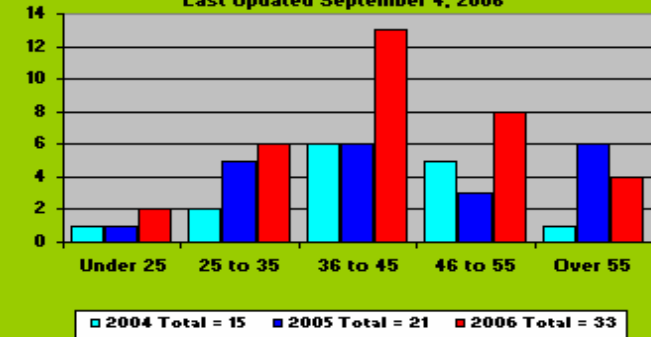
The Belt Railway of Chicago
All Injury Incidents by Time Into Shift
 Last Updated September 4, 2006



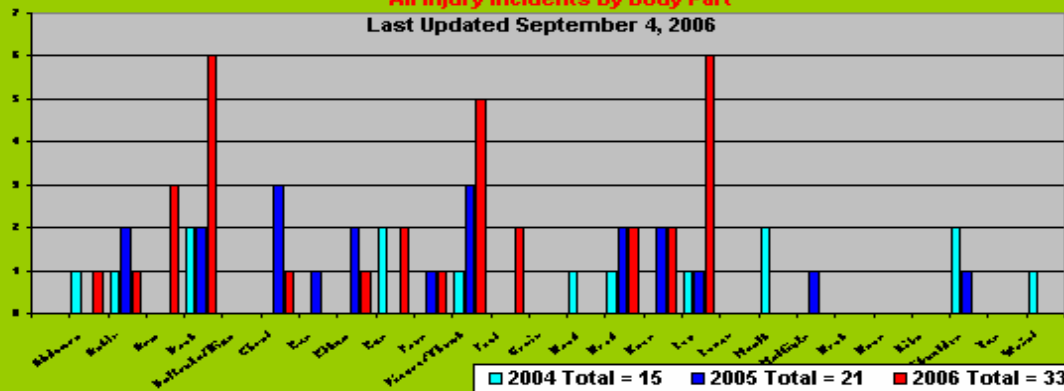
The Belt Railway of Chicago
All Injury Incidents by Nature of Injury
 Last Updated September 4, 2006



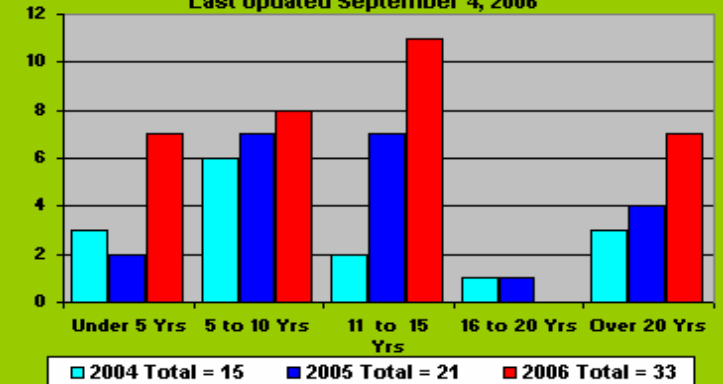
The Belt Railway of Chicago
All Injury Incidents by Age
 Last Updated September 4, 2006



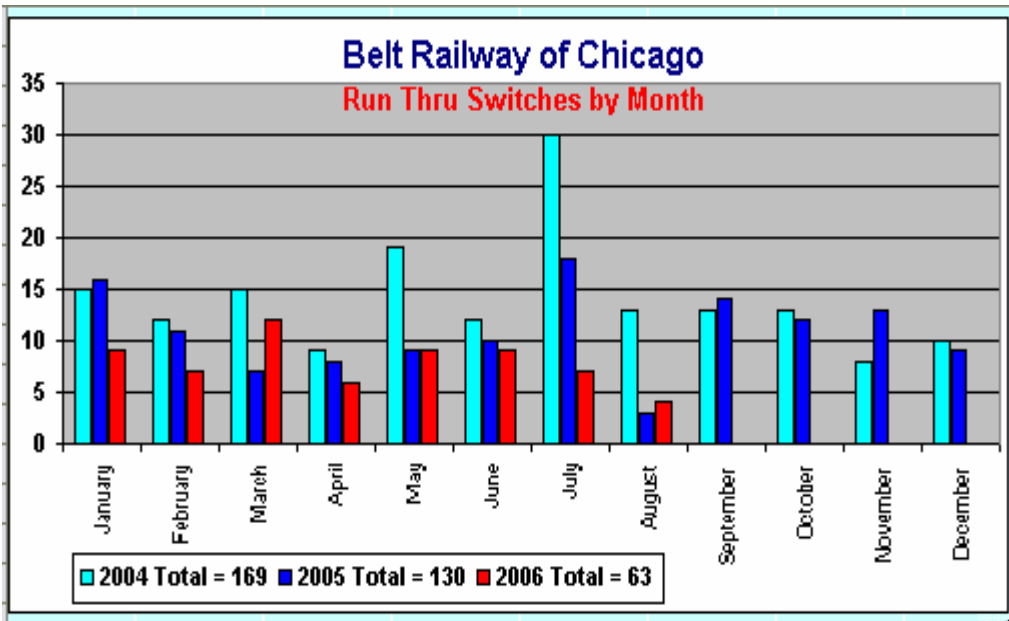
The Belt Railway of Chicago
All Injury Incidents by Body Part
 Last Updated September 4, 2006



The Belt Railway of Chicago
All Injury Incidents by Experience
 Last Updated September 4, 2006



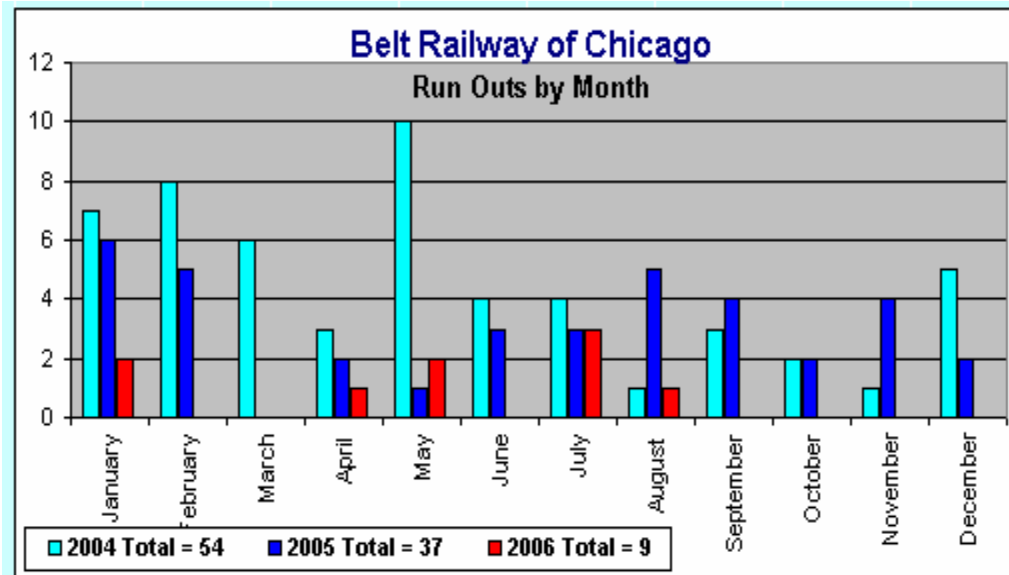
Run Thru Switches



Run Thru Switches BRC vs Foreign Carrier

2005	2006	Chg.
Switches		
67	49	-27%
Foreign Run Through Switches		
15	14	-7%
Total Run Thru Switches		
83	65	22%

Run Outs

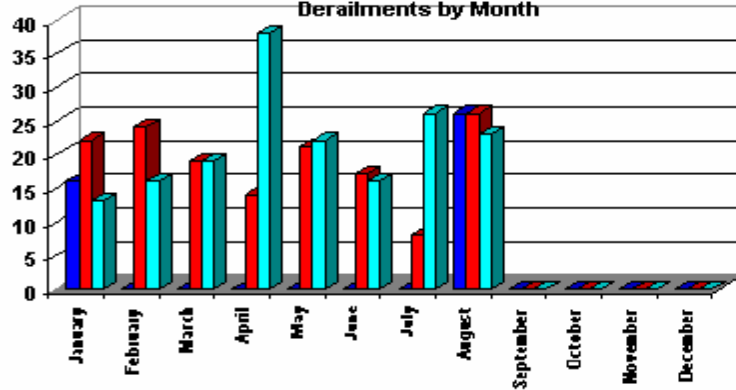


Run Outs

2005	2006	Chg.
Run Outs		
25	9	-64%

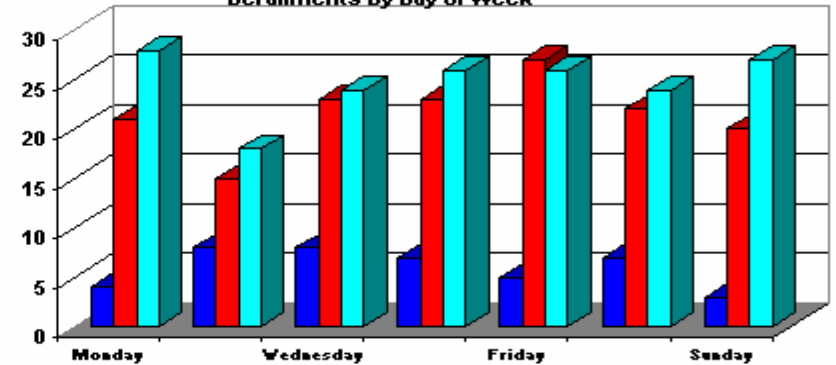


Belt Railway Company of Chicago
Derailments by Month



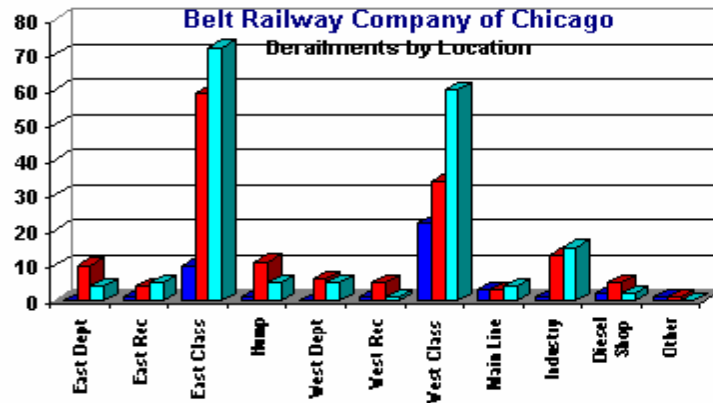
■ 2004 Total = 42 ■ 2005 Total = 151 ■ 2006 Total = 173

Belt Railway Company of Chicago
Derailments by Day of Week



■ 2004 Total = 42 ■ 2005 Total = 151 ■ 2006 Total = 173

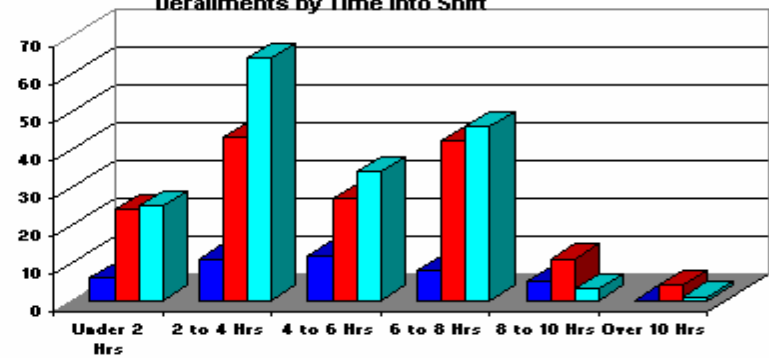
Belt Railway Company of Chicago
Derailments by Location



■ 2004 Total = 42 ■ 2005 Total = 151 ■ 2006 Total = 173

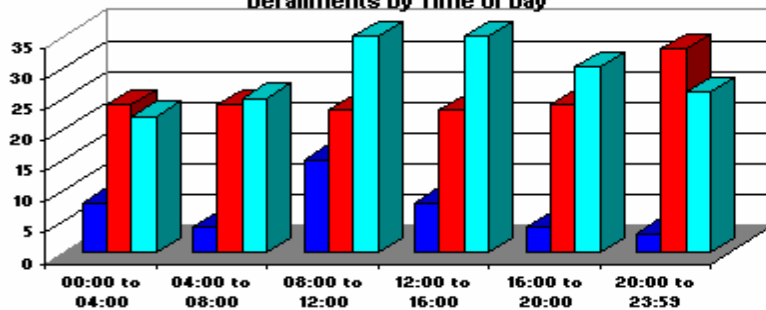
Belt Railway Company of Chicago
Derailments by Time into Shift

By-Pass Coupler (unknown) -
Start of Shift: 07:00, 15:00, 23:00



■ 2004 Total = 42 ■ 2005 Total = 151 ■ 2006 Total = 173

Belt Railway Company of Chicago
Derailments by Time of Day



■ 2004 Total = 42 ■ 2005 Total = 151 ■ 2006 Total = 173

Derailments



Human Factor Derailments

	Switches	Brakes	Shoves	Skates	Derails	Impact	T Hndlg	Make up	Other	TTL	Fgn/Hum	ByPass
Jan	2	0	0	1	0	0	0	0	0	3	1	3
Feb	3	0	0	0	1	0	0	0	0	4	2	9
Mar	1	0	0	0	0	0	0	0	1	2	0	10
Apr	2	1	1	0	0	0	0	0	2	6	2	19
May	2	0	0	2	0	0	0	0	1	5	2	10
Jun	1	0	0	1	0	0	0	0	0	2	0	8
Jul	0	0	1	0	0	0	1	0	1	3	0	13
Aug	0	0	0	0	0	0	1	0	0	1	1	12
Sep										0		
Oct										0		
Nov										0		
Dec										0		
Total	11	1	2	4	1	0	2	0	5	26	8	84

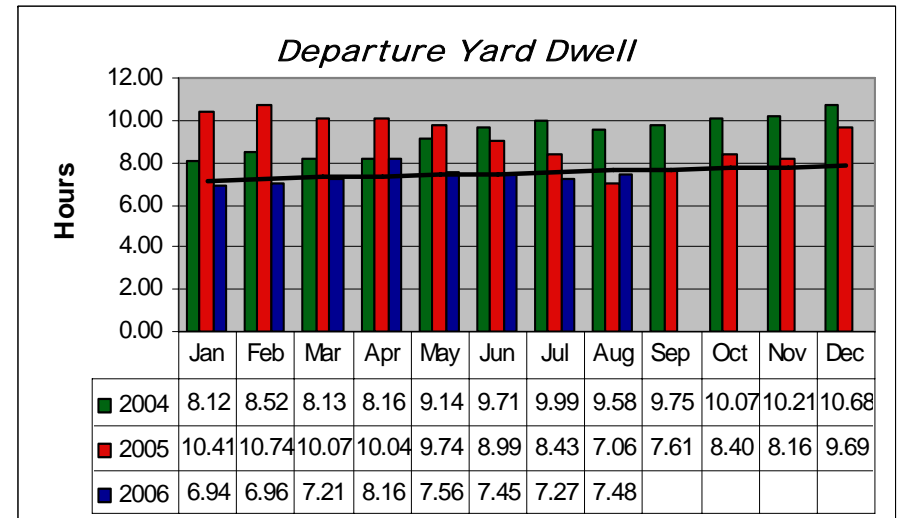
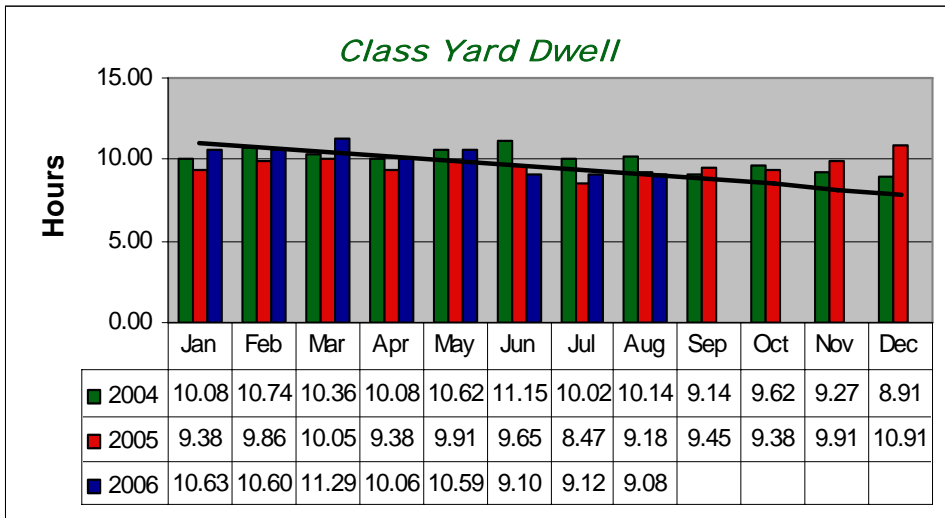
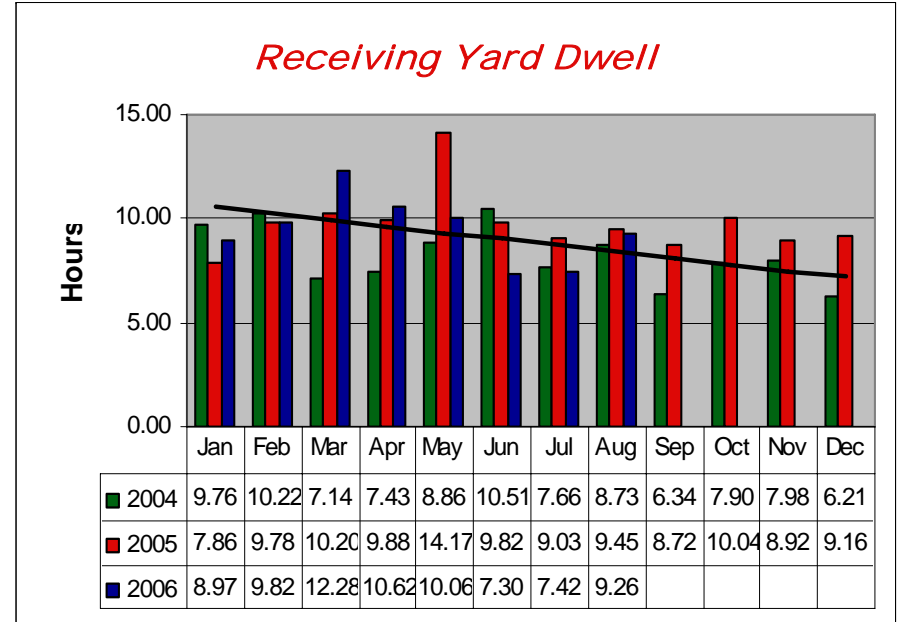
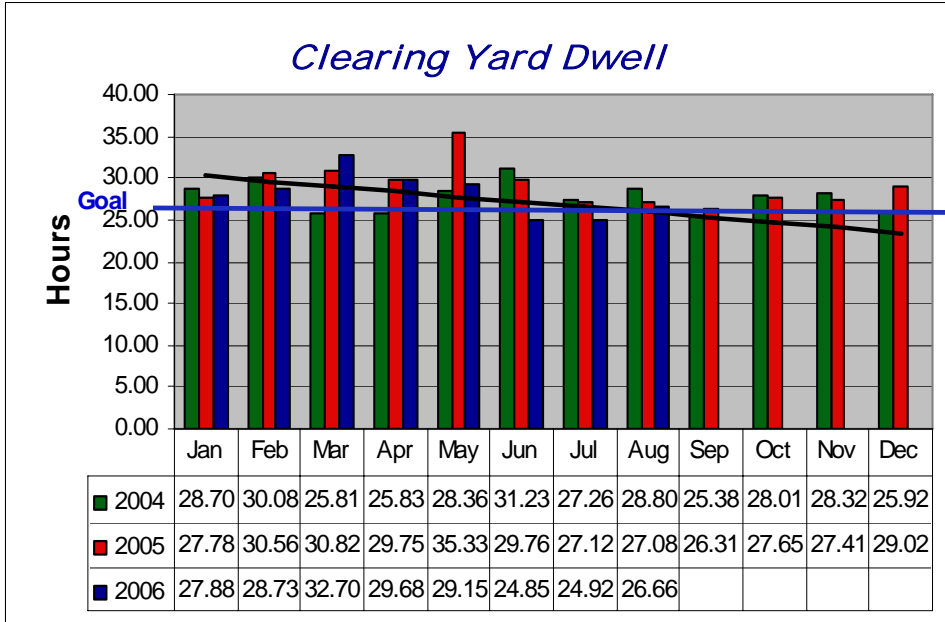
TOTAL BRC Human Factor: 18

Human Factor Derailment Comparison

2005	2006	Chg.	2005	2006	Chg.	2005	2006	Chg.
BRC Human Factor			Foreign Human Factor			Total Human Factor		
39	18	-54%	11	8	-27%	50	26	-48%



Dwell

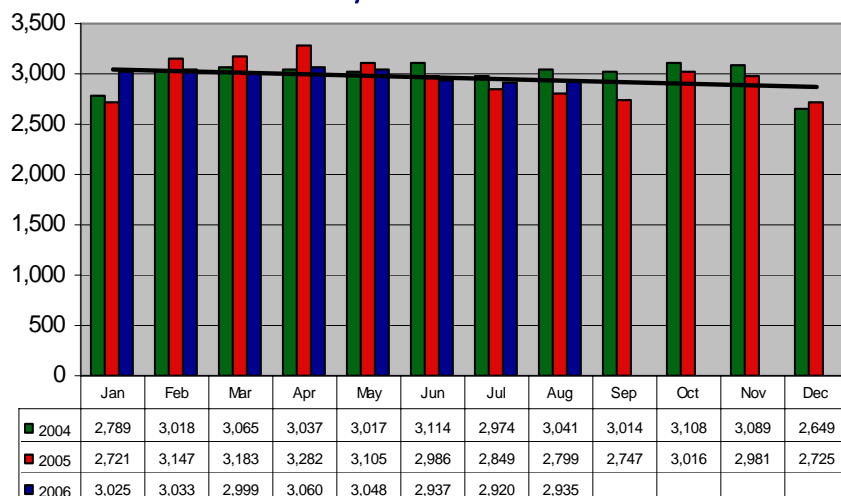


— 2006 Trend Line

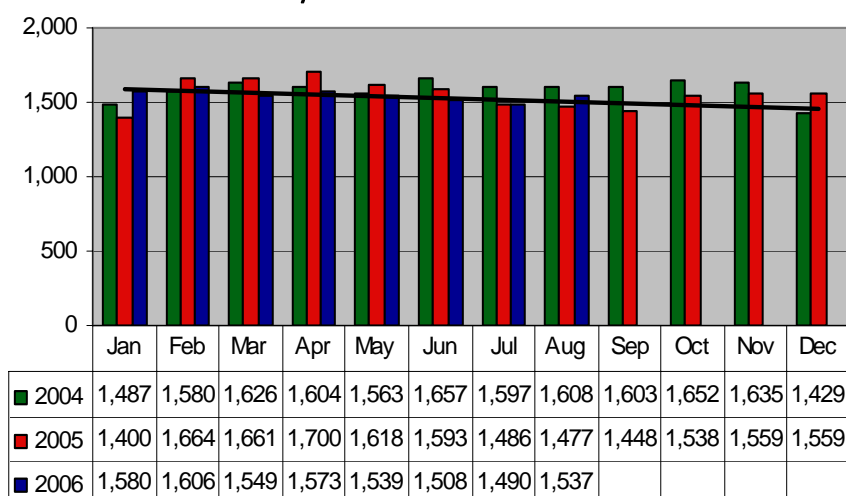


Hump Production

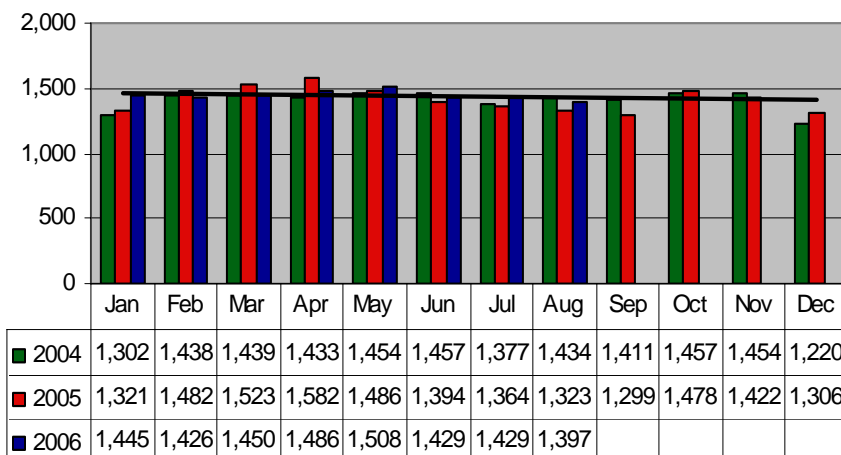
Hump Production



Hump Production - East



Hump Production - West

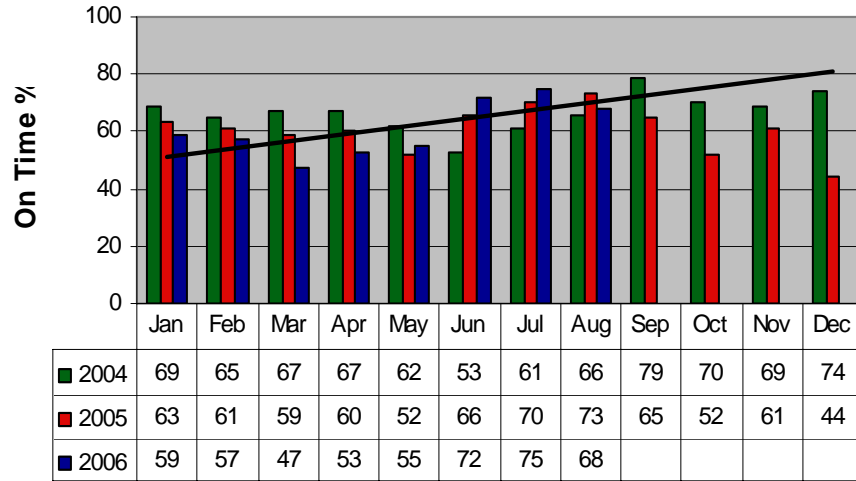




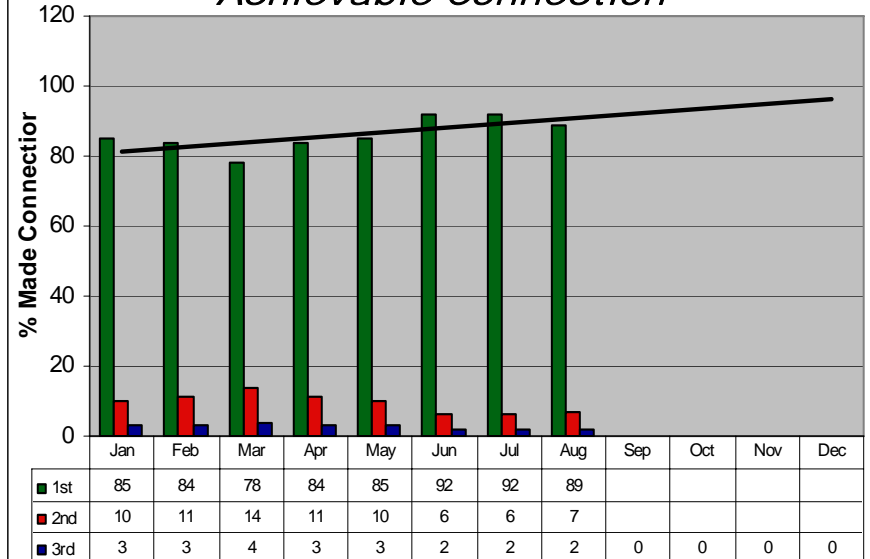
Performance

On Time Departure Performance

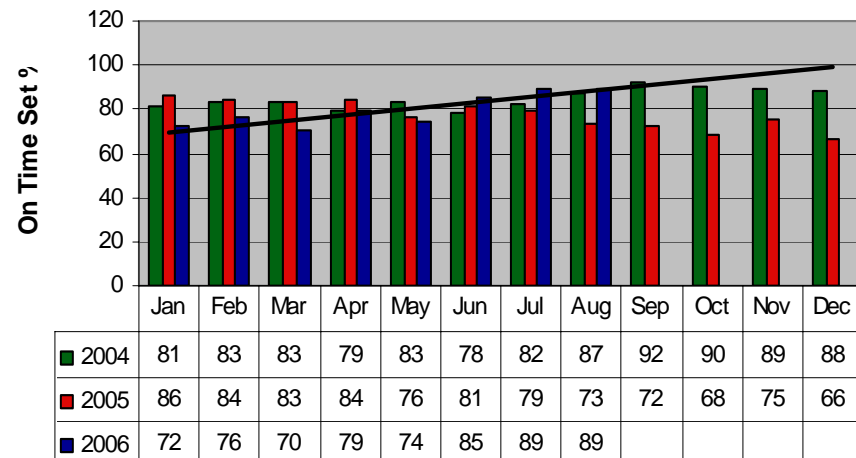
+ / - 2 Hours



Achievable Connection



On Time Set Performance





Cars Handled

